

OFFSITE IMPROVEMENTS FOR  
TUCSON HIGH SCHOOL



SITE OVERVIEW

SHEET INDEX

- 1 COVER SHEET
- 2 GENERAL NOTES
- 3 RESULTS OF SURVEY
- 4 MISCELLANEOUS DETAILS
- 5 MISCELLANEOUS DETAILS
- 6 DEMOLITION PLAN
- 7 GRADING & PAVING PLAN
- 8 HORIZONTAL CONTROL PLAN
- 9 SIGNING & STRIPING PLAN
- 10 HARDSCAPE PLAN
- 11 HARDSCAPE DETAILS

CONSTRUCTED BY:

CONSTRUCTION COMPANY

COMPLETION DATE

RED-LINES BY:

CONSTRUCTION ADMINISTRATOR NAME & COMPANY

COMPLETION DATE

RECORD DOCUMENT BY:

AS-BUILT DESIGNER NAME & COMPANY

COMPLETION DATE

BASIS OF BEARING

THE BASIS OF BEARING FOR THIS PROJECT IS A LINE BETWEEN THE MONUMENT AT 3RD AVENUE AND 6TH STREET AND THE MONUMENT AT 1ST AVENUE AND 6TH STREET, AS SHOWN ON THESE PLANS, BASED ON GEODETIC NORTH DERIVED FROM GPS OBSERVATIONS DURING AN RTK SURVEY. SAID BEARING IS N 89°06'07"E.

BASIS OF ELEVATION

- ▲ THE BASIS OF ELEVATION FOR THIS PROJECT IS BASED ON PIMA COUNTY/CITY OF TUCSON GEODETIC CONTROL POINT, LOCATED NEAR THE INTERSECTION OF 5TH STREET AND 1ST AVENUE, INDEX CODE "G01", SITE ID "EG01". SAID ELEVATION IS 2401.86, NAVD88.

PROJECT INFORMATION

OWNER/DEVELOPER TUCSON UNIFIED SCHOOL DISTRICT  
1010 EAST TENTH STREET  
TUCSON, AZ 85719  
PHONE: 520.225.6000  
CONTACT: DAMON BALLESTEROS

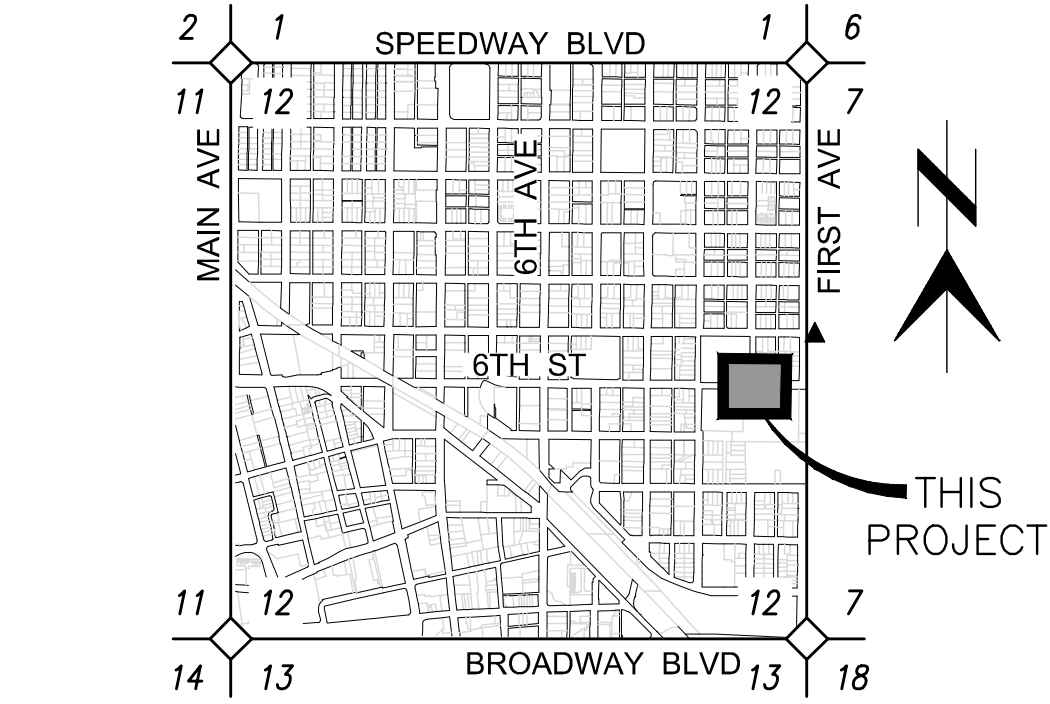
ENGINEER DIBBLE ENGINEERING  
177 NORTH CHURCH AVENUE, SUITE 711  
TUCSON, AZ 85701  
PHONE: 520.495.4065  
CONTACT: GREG VEGA

ADMINISTRATIVE ADDRESS

501 EAST 6TH STREET  
TUCSON, AZ 85705

Dibble  
Engineering

177 N. Church Avenue  
Suite 711  
Tucson, AZ 85701  
P 520.495.4065



LOCATION MAP

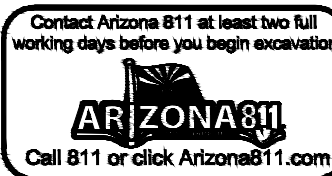
A PORTION OF THE  
SOUTHEAST 1/4 OF SECTION 12,  
TOWNSHIP 14 SOUTH, RANGE 13 EAST,  
G&SRM, PIMA COUNTY, ARIZONA  
3" = 1 MILE

LAT: 32° 13' 39.72" N  
LONG: 110° 57' 45.21" W

LEGEND

EXST	NEW
▲ BENCHMARK	▲ BENCHMARK
□ BRASS CAP IN HANDHOLE	□ BRASS CAP IN HANDHOLE
▢ GRATE	⊙ SEWER MANHOLE
⊙ SEWER MANHOLE	○ C.O. CLEANOUT
○ SEWER CLEANOUT	WM METER
EM METER (TYPE NOTED)	▢ PIPE PLUG
TV PEDESTAL (TYPE NOTED)	⊠ PULLBOX
PP POWER POLE	↑ SIGN
EB PULLBOX (TYPE NOTED)	⌂ STREET LIGHT
A/C PAVEMENT	● FIRE HYDRANT
CONCRETE PAVEMENT	⊗ VALVE
SIGN	— ■ WATER METER/SERVICE
⋄ LIGHT/ PP AND LIGHT	⌂ HORIZONTAL PIPE BENDS
○ FIRE HYDRANT	➡ REDUCER
○ FIRE DEPT CONNECTION	— 8" S — SEWER LINE AND SIZE
⊙ WELL LOCATION	— — — CENTERLINE
⊙ VALVE (TYPE NOTED)	— — — RIGHT-OF-WAY
— — — PROPERTY LINE	===== CURB & GUTTER
— — — RIGHT-OF-WAY	----- EDGE OF PAVEMENT
===== CURB & GUTTER	===== EDGE OF PAVEMENT
----- EDGE OF PAVEMENT	— x — FENCE WIRE
— x — FENCE WIRE	— o — FENCE CHAINLINK
— o — FENCE CHAINLINK	— 2500 — MAJOR CONTOUR
— 2500 — MAJOR CONTOUR	— 2500 — MINOR CONTOUR
— 2500 — MINOR CONTOUR	----- SINGLE CURB
----- SINGLE CURB	--- E --- ELECTRIC (UNDERGROUND)
--- E --- ELECTRIC (UNDERGROUND)	--- OHE --- ELECTRIC (OVERHEAD)
--- OHE --- ELECTRIC (OVERHEAD)	--- G --- GAS
--- G --- GAS	--- T --- TELEPHONE
--- T --- TELEPHONE	--- 12" S --- SEWER LINE
--- 12" S --- SEWER LINE	--- SD --- STORM DRAIN
--- SD --- STORM DRAIN	--- W --- WATER LINE

COVER SHEET



DEPARTMENT OF TRANSPORTATION/ENGINEERING DIVISION

OFFSITE IMPROVEMENTS FOR  
TUCSON HIGH SCHOOL

Approvals	Signatory	Date	Approved _____ 20__	1
DESIGN SECTION/PERMITS AND CODES				OF
TRAFFIC ENGINEERING				11
STREETS AND TRAFFIC MAINTENANCE			TRANSPORTATION DIRECTOR	
ENGINEERING LANDSCAPE ARCH			REF. _____ SCALE: SHOWN	
ENGINEERING ADMINISTRATOR			PLAN NO. _____	
DRWN. BY _DGW_ 2019	DSGN. BY _GDV_ 2019	CHKD. BY _GDV_ 2019		

ORIGINAL SIZE 24"x36"  
DO NOT SCALE A  
REDUCED SIZE



SEWER NOTES:

- ALL DESIGN STANDARDS, MATERIALS AND WORKMANSHIP FOR PUBLIC SANITARY SEWERS SHALL BE IN ACCORDANCE WITH THE PIMA COUNTY REGIONAL WASTEWATER RECLAMATION DEPARTMENT (PCRWDR) ENGINEERING DESIGN STANDARDS 2016 (EDS 2016) AND THE PCRWDR STANDARD SPECIFICATIONS AND DETAILS FOR CONSTRUCTION 2016 (SSDC 2016). SAID DOCUMENTS ARE AVAILABLE THROUGH THE PCRWDR WEBSITE.
- THE CONTRACTOR SHALL CONTACT “ARIZONA 811” (DIAL 811 OR 1-800-782-5348) A MINIMUM OF TWO (2) BUSINESS DAYS PRIOR TO COMMENCING WITH ANY EXCAVATION. THE CONTRACTOR SHALL KEEP ALL UNDERGROUND FACILITY LOCATION REQUESTS UP-TO-DATE AND COMPLY WITH APPLICABLE ARIZONA REVISED STATUTES (A.R.S.), TITLE 40, CHAPTER 1, ARTICLE 6.3, SECTION 40-360.22. CONCERNS REGARDING THE ACCURACY BETWEEN THE UNDERGROUND FACILITY MARKINGS AND THE PROJECT PLANS SHALL BE REPORTED IMMEDIATELY TO THE DESIGN ENGINEER.
- CONTRACTOR SHALL MAINTAIN ACCESS TO ALL SANITARY SEWER MANHOLES AT ALL TIMES.
- IMMEDIATELY REPORT ANY OF THE FOLLOWING TO EITHER PCRWDR FIELD ENGINEERING (520-724-2651) OR PCRWDR CONVEYANCE DIVISION (520-724-3400): ANY RELEASE OF SEWAGE, ANY DAMAGE TO THE PUBLIC SANITARY SEWER SYSTEM, OR THE DROPPING OF DEBRIS INTO THE PUBLIC SANITARY SEWER SYSTEM. ON WEEKENDS, HOLIDAYS, OR BETWEEN 5:00 P.M. AND 7:00 A.M., IMMEDIATELY CALL PCRWDR OPERATIONS CONTROL CENTER AT (520-724-6048) AND REQUEST A PCRWDR REPRESENTATIVE TO BE DISPATCHED TO THE SITE. TAKE IMMEDIATE ACTION TO CONTAIN THE SANITARY SEWAGE OVERFLOW (SSO) FROM THE SEWER SYSTEM. THE CONTRACTOR SHALL BE RESPONSIBLE FOR ALL COSTS TO REPAIR THE SYSTEM, FOR ALL EXPENSES TO MITIGATE THE RELEASE AND TO DISINFECT THE RELEASE AREAS AND FOR ANY REGULATORY PENALTIES LEVIED ON PCRWDR BECAUSE THE SSO ENTERED A NATURAL DRAINAGEWAY OR STORM WATER DRAINAGE SYSTEM. THE CONTRACTOR SHALL REPAIR ALL DAMAGE AS DIRECTED AND APPROVED BY PCRWDR.
- MODIFICATION OR ADJUSTMENT TO EXISTING PIMA COUNTY SEWER FACILITIES SHALL NOT COMMENCE UNTIL: (A) CONTRACTOR HAS OBTAINED A PUBLIC SEWER CONSTRUCTION PERMIT FROM PCRWDR (520-724-6369) AND (B) A PRE-CONSTRUCTION MEETING WITH THE ASSIGNED PIMA COUNTY PROJECT INSPECTOR IS SCHEDULED, AT LEAST THREE (3) FULL WORKING DAYS PRIOR TO THE START OF SEWER CONSTRUCTION. FLOW MANAGEMENT PLANS SHALL BE SUBMITTED TO FIELD ENGINEERING THIRTY (30) DAYS PRIOR TO THE PRE-CONSTRUCTION MEETING.
- IT IS THE CONTRACTOR’S RESPONSIBILITY TO ADJUST OR RECONSTRUCT ALL SANITARY SEWER MANHOLES TO FINISHED GRADE. ALL FRAME AND COVER ADJUSTMENTS SHALL BE IN ACCORDANCE WITH PCRWDR STANDARD SPECIFICATIONS AND DETAILS FOR CONSTRUCTION 2016, STANDARD DETAILS RWRD-211, -212, -304, -305 OR -307, AS APPLICABLE. THE CONTRACTOR SHALL PROTECT THE BENCH AND FLOW CHANNELS WITH A COVER PER RWRD-306. PRIOR TO REINSTALLATION, IT IS THE CONTRACTOR’S RESPONSIBILITY TO ENSURE THAT THE FRAME AND COVER ARE FREE OF ALL ATTACHED MATERIALS (ASPHALT, CONCRETE, ETC.) AND THAT ALL VENT HOLES ARE OPEN AND CLEAR OF OBSTRUCTIONS, AS APPROVED BY THE FIELD INSPECTOR. EXISTING FRAMES AND COVERS THAT ARE DAMAGED OR CANNOT BE COMPLETELY CLEANED SHALL BE REPLACED WITH A NEW AND EQUIVALENT FRAME AND COVER IN ACCORDANCE STANDARD DETAILS RWRD-213, -214, -215, -216, -217 OR -218. COSTS ASSOCIATED WITH EXISTING FRAMES AND COVERS THAT ARE LOST OR DAMAGED DUE TO THE CONTRACTOR’S OPERATIONS SHALL BE THE RESPONSIBILITY OF THE CONTRACTOR.
- IN ACCORDANCE WITH SSDC 2016, SECTION 2.2.1, THIS PROJECT REQUIRES A FLOW MANAGEMENT PLAN (FMP). IT IS THE RESPONSIBILITY OF THE CONTRACTOR TO: (A) IDENTIFY AND INCLUDE ALL FLOW MANAGEMENT BID COSTS WITH THE PCRWDR SEWER CONSTRUCTION PERMIT APPLICATION, AND (B) PROVIDE A FLOW MANAGEMENT PLAN 30 DAYS PRIOR TO THE PRE-CONSTRUCTION MEETING WITH PCRWDR FIELD ENGINEERING FOR SEWER CONSTRUCTION. FIELD ENGINEERING WILL REVIEW THE FMP WITHIN 10 BUSINESS DAYS TO ACCOMMODATE REVIEW AND REVISION CYCLES. REFER TO SECTION 2 OF THE PCRWDR STANDARD SPECIFICATIONS AND DETAILS FOR CONSTRUCTION 2016 (SSDC 2016). FOR FMP QUESTIONS, PLEASE CONTACT PCRWDR FIELD ENGINEERING AT (520) 724-2651.
- AFTER THE COMPLETION OF PAVEMENT WORK, THE CONTRACTOR SHALL VERIFY THAT ALL SANITARY SEWER MANHOLE COVERS AND PICK HOLES ARE CLEAN AND FREE OF ANY CONSTRUCTION MATERIALS, DEBRIS, AND/OR OBSTRUCTIONS. PRIOR TO THE PRECONSTRUCTION MEETING WITH PCRWDR, THE CONTRACTOR SHALL IDENTIFY ALL EXISTING SANITARY SEWER MANHOLE COVERS HAVING FOREIGN MATERIALS ATTACHED. FOREIGN MATERIALS SHALL BE REMOVED FROM THE EXISTING MANHOLE COVERS REGARDLESS OF EXISTING OR NEW CONDITIONS. IF BUILD-UP IS TOO HEAVY TO BE REMOVED, THE CONTRACTOR SHALL REPLACE THE MANHOLE FRAME AND COVER AND SALVAGED ITEMS SHALL BE DELIVERED TO PIMA COUNTY CONVEYANCE AT 3355 N. DODGE BLVD., TUCSON, AZ. THE CONTRACTOR SHALL CONTACT GEORGE O’HAGAN AT 520-724-3417 PRIOR TO DELIVERY TO SCHEDULE A TIME TO DELIVER SALVAGED FRAMES AND COVERS.
- ANY WORK INSIDE OR AROUND AN EXISTING SANITARY SEWER MANHOLE, INCLUDING MANHOLES THAT ARE LOCATED WITHIN THE ROUGH GRADING LIMITS FOR A PROJECT, SHALL BE PROTECTED FROM FALLING DEBRIS BY INSTALLING A TEMPORARY FLOW CHANNEL COVER PER PCRWDR STANDARD SPECIFICATIONS AND DETAILS FOR CONSTRUCTION, STANDARD DETAIL RWRD-306. THE CONTRACTOR SHALL REMOVE ANY DEBRIS THAT ENTERS A MANHOLE DURING CONSTRUCTION. FAILURE BY THE CONTRACTOR TO PROMPTLY REMOVE DEBRIS FROM A MANHOLE SHALL RESULT IN PCRWDR TAKING CORRECTIVE ACTION THAT WILL THEN BE BILLED TO THE CONTRACTOR.
- PRIOR TO COMMENCING WITH MANHOLE ADJUSTMENT WORK (I.E. REMOVAL OF THE MANHOLE FRAME AND COVER), THE CONTRACTOR SHALL VISUALLY INSPECT THE CONDITION OF THE MANHOLE FRAME, COVER AND GRADE RINGS TO IDENTIFY ANY SPECIAL COATINGS, LININGS OR OTHER CONDITIONS THAT MAY REQUIRE ADDITIONAL WORK AND INSPECTION BY PCRWDR. IF SUCH CONDITIONS ARE IDENTIFIED, THE CONTRACTOR SHALL IMMEDIATELY NOTIFY FIELD ENGINEERING AT (520) 724-2651 FOR FURTHER DIRECTION.

PAVING NOTES:

- ALL CONSTRUCTION ACTIVITY AND TEST METHODS SHALL BE IN CONFORMANCE WITH PIMA ASSOCIATION OF GOVERNMENT’S (PAG) STANDARD SPECIFICATIONS FOR PUBLIC IMPROVEMENTS (SSPI) 2015 EDITION OR CURRENT EDITION.
- DRAINAGE PIPE SHALL CONFORM TO PAG SPEC SECTION 501 OR AS DIRECTED BY THE ENGINEER.
- PIPE BEDDING SHALL CONFORM TO PAG STANDARD DETAIL 108.
- AGGREGATE BASE COURSE SHALL CONFORM TO PAG SSPI SECTION 303.
- ASPHALTIC CONCRETE SHALL CONFORM TO COT CITY MIX (MIX #2).
- ALL CONCRETE SHALL CONFORM TO PAG SSPI SECTION 1006, CLASS S, 3,000 PSI COMPRESSIVE STRENGTH AT 28 DAYS, UNLESS OTHERWISE SPECIFIED.
- NO GEOTECHNICAL REPORT HAS BEEN INCLUDED FOR THIS PROJECT.
- ALL DRAINAGE INFRASTRUCTURES, INDICATED ON THE PLANS, ARE IN ACCORDANCE TO THE APPROVED DRAINAGE REPORT APPROVED BY DEVELOPMENT SERVICES DEPARTMENT.
- ALL CHANGES TO THESE PLANS MUST BE CLEARED BY THE CITY OF TUCSON CITY ENGINEER’S PERMITS AND CODES SECTION, PRIOR TO CONSTRUCTION.
- THE CITY SHALL NOT BE HELD LIABLE FOR ANY ERRORS AND/OR OMISSIONS ON THESE PLANS. ITEMS NOT MEETING CITY STANDARDS SHALL BE REPAIRED/REPLACED AT NO COST TO THE CITY.
- THE ENGINEER OF RECORD SHALL SUBMIT TO THE CITY FOR REVIEW ANY CHANGES TO THE APPROVED PLANS PRIOR TO CONSTRUCTION. ADDITIONALLY, THE ENGINEER OF RECORD SHALL CERTIFY ALL CHANGES MEETING ALL APPLICABLE STANDARDS, CODES, AND ORDINANCES.
- AN EXCAVATION PERMIT SHALL BE OBTAINED FROM THE CITY OF TUCSON TRANSPORTATION DEPARTMENT PRIOR TO ANY WORK WITHIN THE PUBLIC RIGHT-OF-WAY.
- A PRE-CONSTRUCTION FIELD MEETING SHALL BE CONDUCTED WITH THE CITY OF TUCSON TRANSPORTATION INSPECTOR PRIOR TO ANY WORK WITHIN THE PUBLIC RIGHT-OF-WAY.
- THE EXTENT AND TYPE OF SURFACE TREATMENTS/REPAIRS INDICATED ON THE PLANS MAY NOT BE ALL INCLUSIVE OF THE WORK THAT IS NEEDED. ADDITIONAL REPAIRS, PAVING, OR REPLACEMENT MAY BE NEEDED DEPENDING ON FIELD CONDITIONS.
- THE CONTRACTOR SHALL CONTACT AND/OR COORDINATE ANY WORK WITH COT STREETS & TRAFFIC MAINTENANCE DIVISION, MEDIAN ISLAND MAINTENANCE SECTION (791-3154) PRIOR TO DISTURBING ANY COT/DOT LANDSCAPING OR IRRIGATION SYSTEMS. ADDITIONALLY, THE CONTRACTOR SHALL REPAIR OR REPLACE ANY DISTURBED COT/DOT LANDSCAPING OR IRRIGATION SYSTEMS, INCLUDING REPLACEMENT OF ANY DAMAGED PLANTS. CONTACT GARY WITTWER @ (791-5100) FOR INSPECTION AND PERMITS FOR LANDSCAPING. FOR IRRIGATION REMOVAL/REPLACEMENT CONTACT PAUL ROSENBOOM @ (791-3154).
- THE PIA INSPECTOR SHALL VERIFY THAT THE SAW-CUT LINE IS LOCATED WITHIN COMPETENT PAVEMENT. ADJUSTMENTS TO THE PLAN SHALL BE DOCUMENTED AND AS-BUILT; A ONE FOOT MINIMUM SHALL BE PROVIDED.
- CONTRACTOR SHALL OBTAIN ALL OTHER PERMITS AS REQUIRED BY LOCAL, STATE AND FEDERAL REQUIREMENTS.
- A COPY OF THE APPROVED PLAN SHALL BE KEPT IN AN EASILY ACCESSIBLE LOCATION ON THE SITE AT ALL TIMES DURING CONSTRUCTION.
- SIGNAGE AND STRIPING SHOULD BE COORDINATED WITH TRAFFIC ENGINEERING AND INSTALLED AT NO EXPENSE TO THE PUBLIC. CALL TRAFFIC ENGINEERING AT 791-4259 PRIOR TO THE INSTALLATION OR REMOVAL OF STRIPING AND SIGNAGE.
- UPON COMMENCEMENT OF WORK, TRAFFIC CONTROL DEVICES SHALL BE POSTED AND MAINTAINED BY THE CONTRACTOR UNTIL SUCH TIME AS THE WORK IS COMPLETED. ALL WARNING SIGNS BARRICADES ETC. SHALL BE IN ACCORDANCE WITH THE MANUAL ON UNIFORM TRAFFIC CONTROL DEVICES ADOPTED BY THE STATE OF ARIZONA PURSUANT TO A.R.S. 28-650. CONTACT TRAFFIC ENGINEERING, 791-4259, 48-HOURS PRIOR TO PLACING OR REMOVING ANY SAID TRAFFIC CONTROL DEVICES.
- CONTRACTOR SHALL CALL BLUE STAKE AS MANDATED BY THE ARIZONA REVISED STATUTES AT 1-800-782-5348 BEFORE ANY CONSTRUCTION BEGINS TO VERIFY LOCATION OF EXISTING UTILITIES SHOWN OR NOT SHOWN. EXISTING UTILITY LOCATIONS SHOWN HEREON ARE ONLY APPROXIMATE. IT IS THE CONTRACTOR’S RESPONSIBILITY TO CONFIRM HORIZONTAL AND VERTICAL LOCATION OF ALL UTILITIES WITHOUT DAMAGING SAME. DAMAGED UTILITIES SHALL BE REPAIRED AT NO EXPENSE TO THE CITY.
- THE CONTRACTOR SHALL CONTACT AND/OR COORDINATE ANY WORK WITH COT STREETS & TRAFFIC MAINTENANCE DIVISION, ELECTRIC SHOP (791-3154) PRIOR TO RELOCATION OR PLACEMENT OF ANY STREET LIGHTING OR TRAFFIC FACILITIES. CONTACT ERNIE ENCINAS AT (791-3154) FOR STREET LIGHTING/TRAFFIC SIGNAL PLAN REVIEW.
- THE CONTRACTOR SHALL COMPLY WITH ALL APPLICABLE OCCUPATIONAL SAFETY AND HEALTH ADMINISTRATION REGULATIONS.

SIGNING NOTES:

- ALL SIGNS SHALL BE IN COMPLIANCE WITH THE 2009 EDITION OF THE MANUAL ON UNIFORM TRAFFIC CONTROL DEVICES, 2002 EDITION OF THE PIMA COUNTY AND CITY OF TUCSON TRAFFIC SIGNING DESIGN MANUAL, THE CURRENT SUPPLEMENTAL SPECIFICATIONS, THESE PLANS, AND THE SPECIAL PROVISIONS.
- SIGNS MAY BE MODIFIED AND LOCATIONS ADJUSTED TO FIT CONDITIONS AS DIRECTED BY THE TRAFFIC ENGINEER.

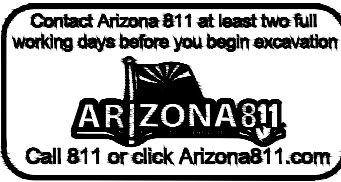
SIGNING NOTES (CON’T):

- THE CONTRACTOR SHALL VERIFY ACTUAL REQUIRED POST LENGTHS.
- ALL PERFORATED POSTS SHALL BE INSTALLED IN A CONCRETE FOUNDATION, UNLESS OTHERWISE DIRECTED BY THE JURISDICTION TRAFFIC ENGINEER.
- ALL SIGN STATION LOCATIONS ARE APPROXIMATE. THE CONTRACTOR SHALL VERIFY ACTUAL SIGN LOCATIONS WITH THE TRAFFIC ENGINEER PRIOR TO THE INSTALLATION OF ALL SIGNS. THE CONTRACTOR SHALL BE RESPONSIBLE FOR COORDINATING ALL WORK WITH BLUE STAKE AND FOR INSTALLING ALL TRAFFIC SIGNS IN THE FIELD.
- ALL SIGN PANELS SHALL HAVE TYPE II SHEETING.
- ALL NEW SIGNS SHALL HAVE ALUMINUM BACKING, UNLESS OTHERWISE SPECIFIED.
- ALL EXISTING SIGNS TO BE REMOVED AS PART OF THIS PROJECT ARE TO BE DELIVERED TO THE CITY OF TUCSON SIGN SHOP AT 4004 S. PARK (791-3154). THE CONTRACTOR IS RESPONSIBLE FOR UNLOADING THE SALVAGED MATERIAL. ANY SALVAGED SIGN THAT IS TO BE REUSED SHALL BE TEMPORARILY STORED IN A SAFE LOCATION UNTIL REINSTALLATION.

MARKING NOTES:

- ALL PAVEMENT MARKINGS SHALL CONFORM TO PIMA COUNTY/CITY OF TUCSON (PC/COT) STANDARDS AND SPECIFICATIONS.
- THE PERMANENT PAVEMENT MARKINGS MAY BE MODIFIED AS DIRECTED BY THE TRAFFIC ENGINEER.
- ALL LANE DIMENSIONS ARE FROM CENTER OF LANE LINE, CENTER OF DOUBLE LANE LINE, FACE OF CURB, OR EDGE OF PAVEMENT UNLESS OTHERWISE NOTED.
- THE PAVEMENT MARKING DRAWINGS ARE SCHEMATIC ONLY. THE CONTRACTOR SHALL FOLLOW ALL DIMENSIONS, DETAILS, AND STANDARDS WHEN INSTALLING PAVEMENT STRIPING, MARKINGS AND MARKERS.
- THE FINAL LONGITUDINAL STRIPING SHALL BE 60 MIL (0.060”) THICK HOT-SPRAYED THERMOPLASTIC REFLECTORIZED STRIPING PLACED OVER THE TEMPORARY STRIPING WITHIN 14 TO 30 CALENDAR DAYS AFTER COMPLETION OF THE FINAL PAVEMENT SURFACE, OR AS DIRECTED BY THE TRAFFIC ENGINEER. ALL OTHER MARKINGS SHALL BE APPLIED AT THE SAME TIME. TEMPORARY STRIPING SHALL BE PAINT.
- ALL FINAL TRANSVERSE MARKINGS SHALL BE HOT SPRAYED 90 MIL (0.090”) THERMOPLASTIC STRIPING. ALL PAVEMENT ARROWS AND LEGENDS SHALL BE HOT SPRAYED 90 MIL THERMOPLASTIC PAVEMENT MARKING (0.090”). EXTRUDED THERMOPLASTIC OR PERFORMED APPLICATIONS MAY BE USED IF APPROVED BY THE TRAFFIC ENGINEER.
- THE CONTRACTOR SHALL BE RESPONSIBLE FOR THE LAYOUT AND INSTALLATION OF PAVEMENT MARKINGS ON FINAL SURFACE COURSE FOLLOWING CONTROL POINTS THAT HAVE BEEN SET NO MORE THAN 50 FEET APART ALONG THE LINES TO BE STRIPED. IN TANGENT SECTIONS OF A ROAD WHERE THE PAVEMENT MARKING PATTERN DOES NOT CHANGE, CONTROL POINTS CAN BE SET AT 200 FEET APART. THE LAYOUT AND INSPECTION OF ALL PAVEMENT MARKINGS SHALL BE APPROVED BY THE TRAFFIC ENGINEER PRIOR TO THE APPLICATION OF MATERIALS.
- IT IS THE CONTRACTOR’S RESPONSIBILITY TO ENSURE THAT THE FINAL SURFACE COURSE IS PLACED SO THAT THE STRIPING IS OFFSET NO MORE THAN ONE FOOT CLEAR OF THE CONSTRUCTION JOINT, UNLESS OTHERWISE DIRECTED BY THE ENGINEER.
- THE CONTRACTOR SHALL CLEAN THE ROADWAY SURFACE TO THE SATISFACTION OF THE TRAFFIC ENGINEER BY SWEEPING AND AIR-JET BLOWING IMMEDIATELY PRIOR TO THE PLACEMENT OF ALL PAVEMENT MARKINGS. THE TEMPERATURE SHALL NOT BE LESS THAN 50 DEGREES F. FOR THE PLACEMENT OF HOT SPRAYED THERMOPLASTIC STRIPING, AND 40 DEGREES F. FOR THE PLACEMENT OF RPMs.
- ALL RAISED PAVEMENT MARKERS (RPMs) SHALL BE INSTALLED SO THAT THE REFLECTIVE FACE OF EACH MARKER IS FACING THE DIRECTION OF TRAFFIC AND IS PERPENDICULAR TO THE DIRECTION OF TRAFFIC FLOW.
- AT INTERSECTION APPROACHES ON ROADWAYS WITH MEDIANS, TYPE C RPMs SHALL BE PLACED AS PER PC/COT STANDARDS OR AS DIRECTED BY THE TRAFFIC ENGINEER.
- ALL REMOVAL OF EXISTING PAVEMENT MARKINGS SHALL BE ACCOMPLISHED IN ACCORDANCE WITH SPEC SECTION 701 OF THE PAG STANDARD SPECIFICATIONS. PAINTING OVER EXISTING STRIPING DOES NOT CONSTITUTE APPROVED STRIPING OBLITERATION.
- THE ENGINEER OF RECORD SHALL BE REQUIRED TO PRODUCE AS-BUILT STRIPING PLANS WITHIN 90 DAYS OF STRIPING COMPLETION.
- BLUE RAISED PAVEMENT MARKERS SHALL BE PLACED ADJACENT TO FIRE HYDRANTS AS SHOWN ON SHEET 7-1 OF THE PC/COT PAVEMENT MARKING DESIGN MANUAL.
- FOR ALL CONSTRUCTION, ALL PAVEMENT MARKINGS AND SIGNING SHALL BE INSTALLED AND SHALL BE PAID FOR BY THE PROJECT OWNER/DEVELOPER.
- FINAL INSPECTION/ACCEPTANCE OF PAVEMENT MARKINGS SHALL BE PERFORMED BY THE TRAFFIC ENGINEER.

GENERAL NOTES

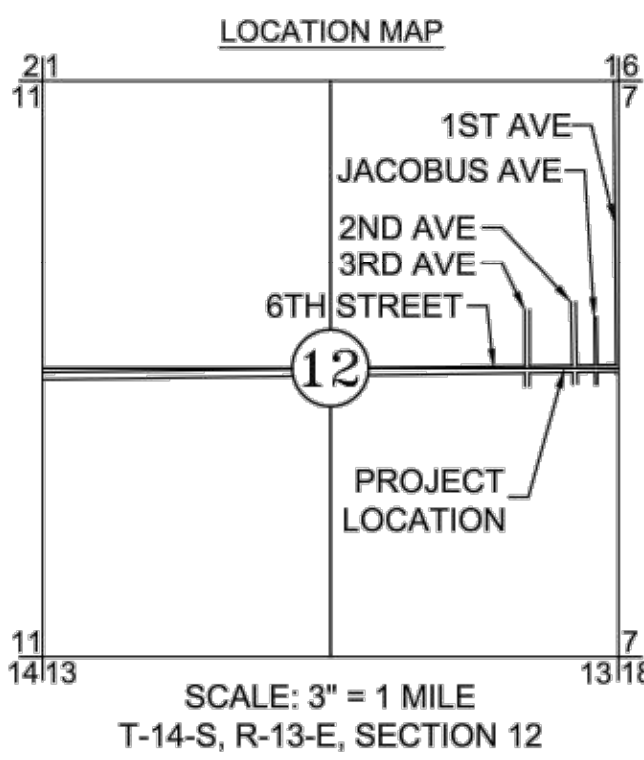


<b>Dibble Engineering</b>		177 N. Church Avenue Suite 711 Tucson, AZ 85701 P 520.498.4063			
NO.	DATE	REVISION	BY	CHKD.	APPR.

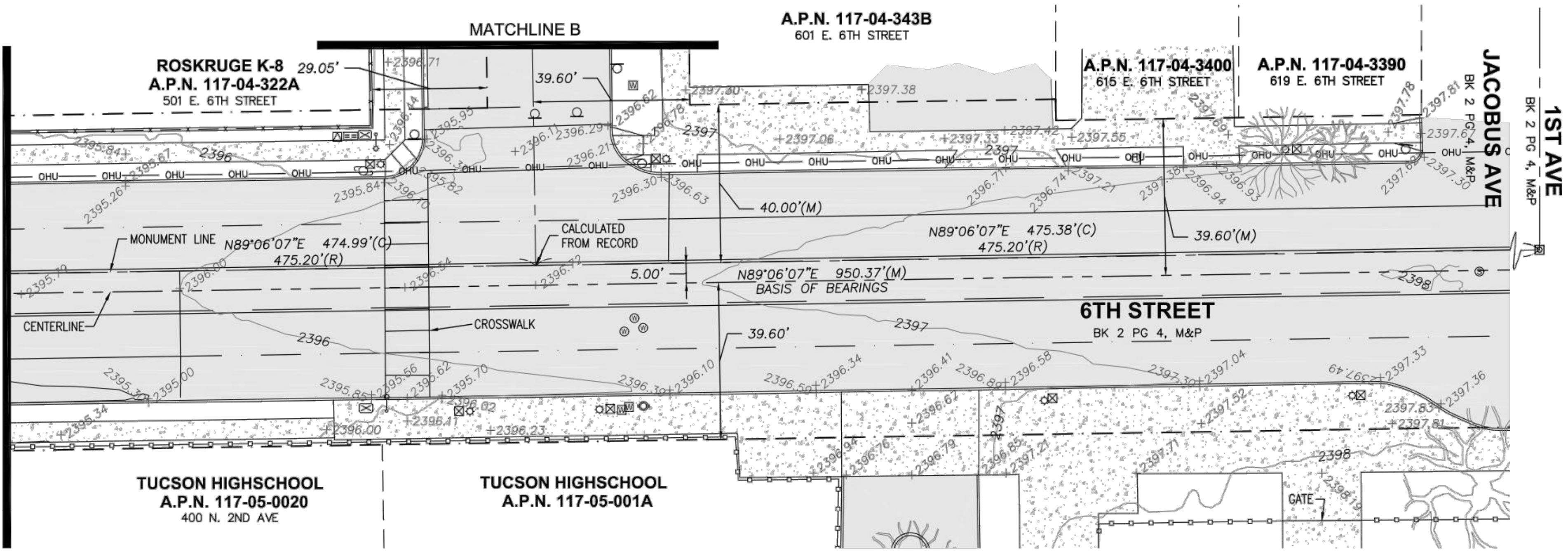
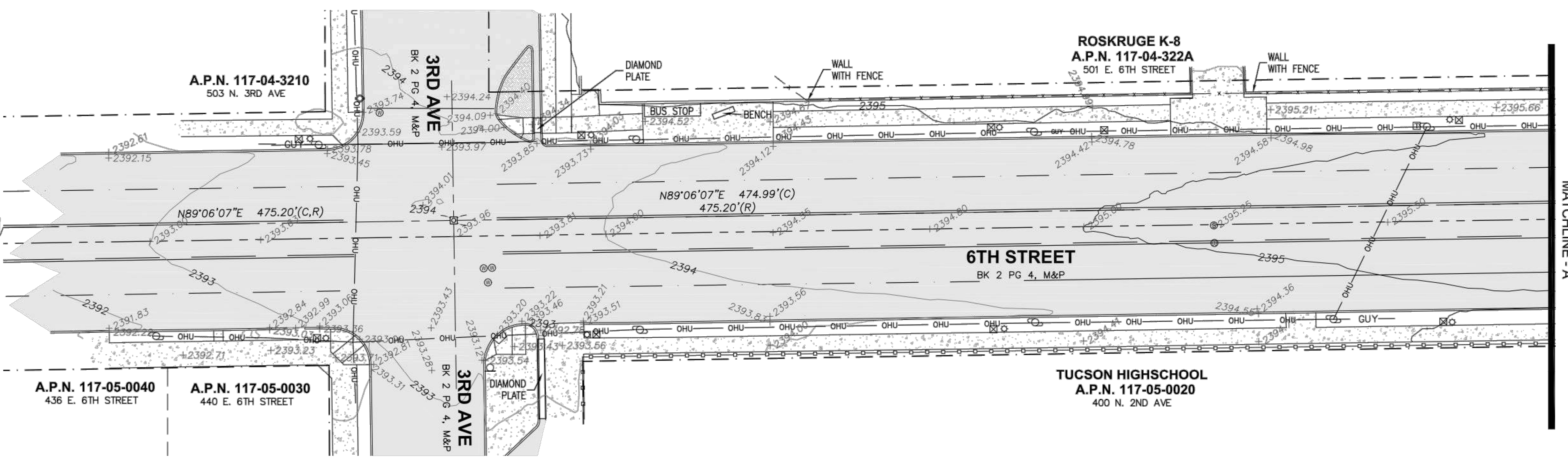
		<b>DEPARTMENT OF TRANSPORTATION/ENGINEERING DIVISION</b>	
		<b>OFFSITE IMPROVEMENTS FOR TUCSON HIGH SCHOOL</b>	
DRWN. BY	DGW	12/19	REF. _____ SCALE: NONE
DSGN. BY	GDV	12/19	_____
CHKD. BY	GDV	12/19	PLAN NO. <u>  X-XXX-XXX  </u>



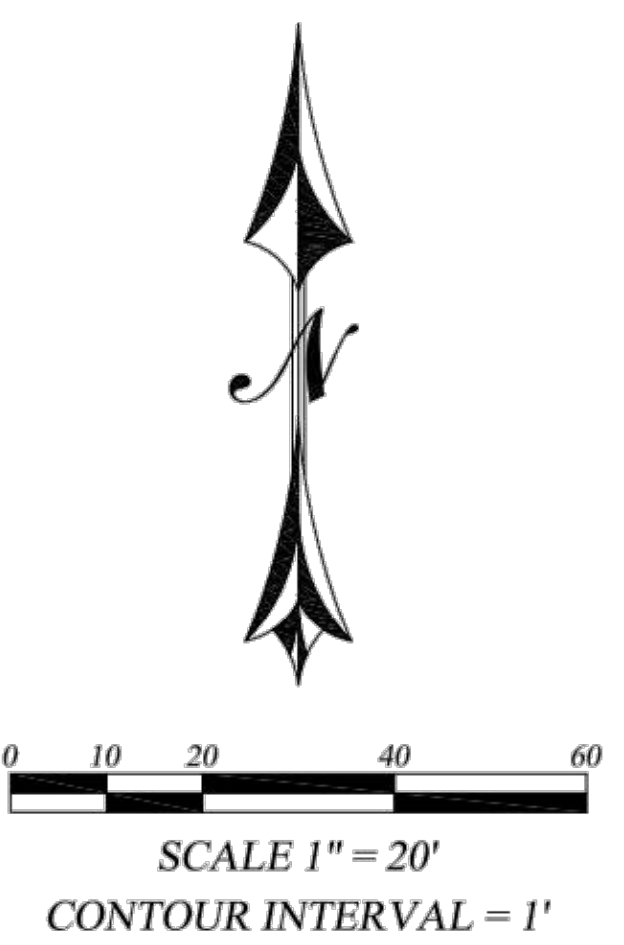
# RESULTS OF SURVEY



- LEGEND:**
- FOUND 2" BRASS CAP. "RLS 35111"
  - FOUND NAIL IN HAND HOLE
  - (M) MEASURED DATA
  - (C) CALCULATED FROM MEASURED DATA
  - (R) RECORD PER M&P BOOK 2, PAGE 4
  - A.P.N. ASSESSOR'S PARCEL NUMBER
  - M&P MAPS AND PLATS
  - RIGHT-OF-WAY LINE
  - CENTERLINE OF RIGHT-OF-WAY
  - ADJACENT PROPERTY LINE
  - SECTION LINE
  - MONUMENT LINE
  - OVERHEAD UTILITY
  - GUY WIRE
  - WROUGHT IRON FENCE
  - POWER POLE
  - ELECTRIC TRANSFORMER
  - ELECTRIC CONTROL BOX
  - TRAFFIC SIGNAL CABINET
  - LIGHT POLE
  - STREET LIGHT / TRAFFIC LIGHT
  - FIRE HYDRANT
  - WATER VALVE
  - WATER METER
  - SEWER MANHOLE
  - SEWER CLEANOUT
  - TRAFFIC SIGNAL CONTROL BOX
  - TELEPHONE PEDESTAL
  - SIGN
  - ASPHALT PAVEMENT
  - BRICK PAVERS
  - CONCRETE
  - MESQUITE TREE



- NOTES:**
- THE SURVEYOR HAS MADE NO INVESTIGATION OR INDEPENDENT RESEARCH FOR EASEMENTS OF RECORD, ENCUMBRANCES, RESTRICTIVE COVENANTS, OWNERSHIP TITLE EVIDENCE, OR ANY OTHER FACTS THAT A CURRENT TITLE SEARCH MAY DISCLOSE.
  - THE BASIS OF BEARINGS FOR THIS PROJECT IS A LINE BETWEEN THE MONUMENT AT 3RD AVENUE AND 6TH STREET AND THE MONUMENT AT 1ST AVENUE AND 6TH STREET AS SHOWN ON THIS SHEET BASED ON GEODETIC NORTH DERIVED FROM G.P.S. OBSERVATIONS DURING AN RTK SURVEY. SAID BEARING IS N 89°06'07" E.
  - THE BASIS OF ELEVATION FOR THIS PROJECT ARE BASED ON PIMA COUNTY/CITY OF TUCSON GEODETIC CONTROL POINT, INDEX CODE "G01" SITE ID "EG01". SAID ELEVATION IS 2401.86, NAVD88.
  - THE CONTOUR INTERVAL FOR THIS PROJECT IS 1 FOOT FOR MINOR CONTOURS AND 5 FEET FOR MAJOR CONTOURS.
  - AERIAL PHOTOS, CONTOURS, AND DIGITAL SURFACE MODEL ARE GENERATED FROM U.S. AERIAL PHOTOGRAPHY. THE U.S. IS A DJI PHANTOM 4 PRO. THIS PROJECT WAS FLOWN ON 6/12/2019.

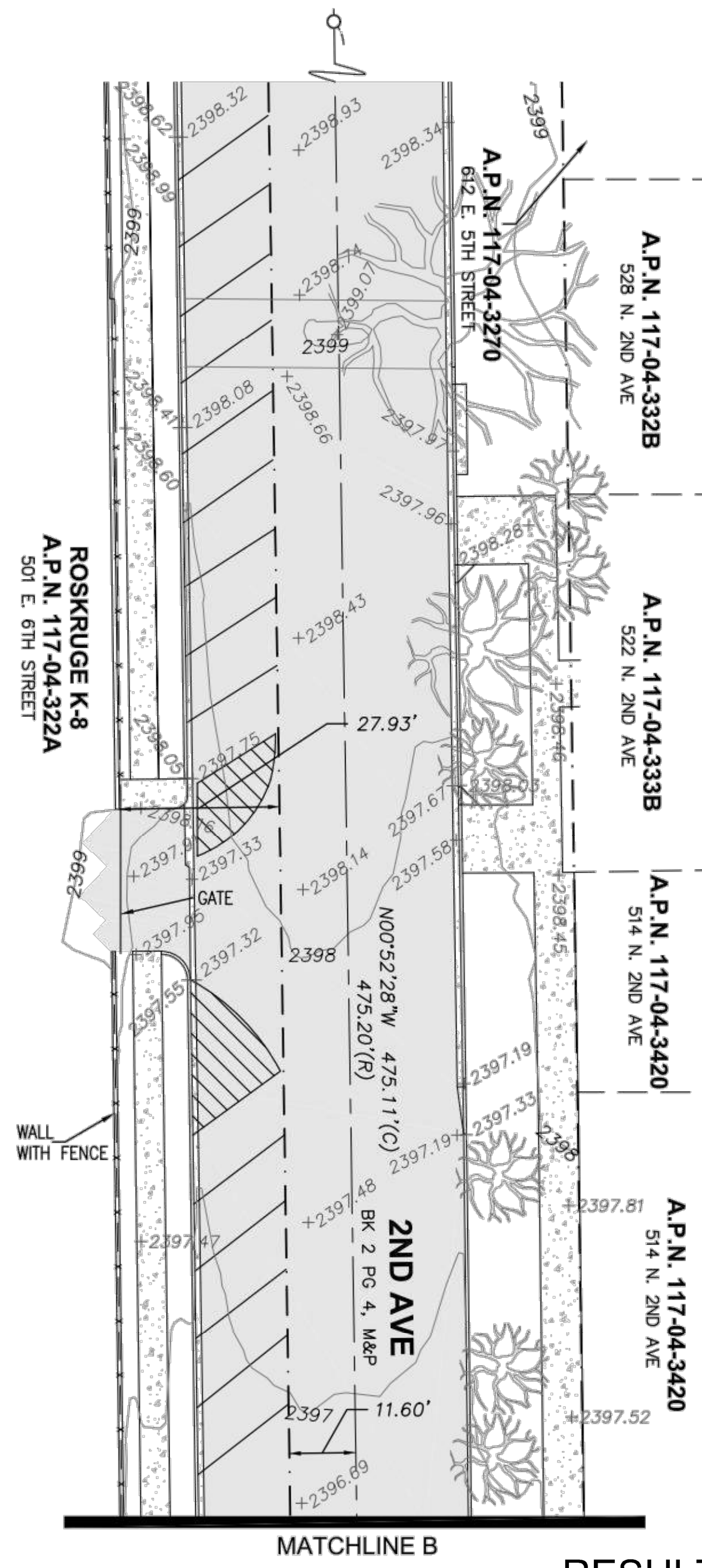


**CERTIFICATION:**

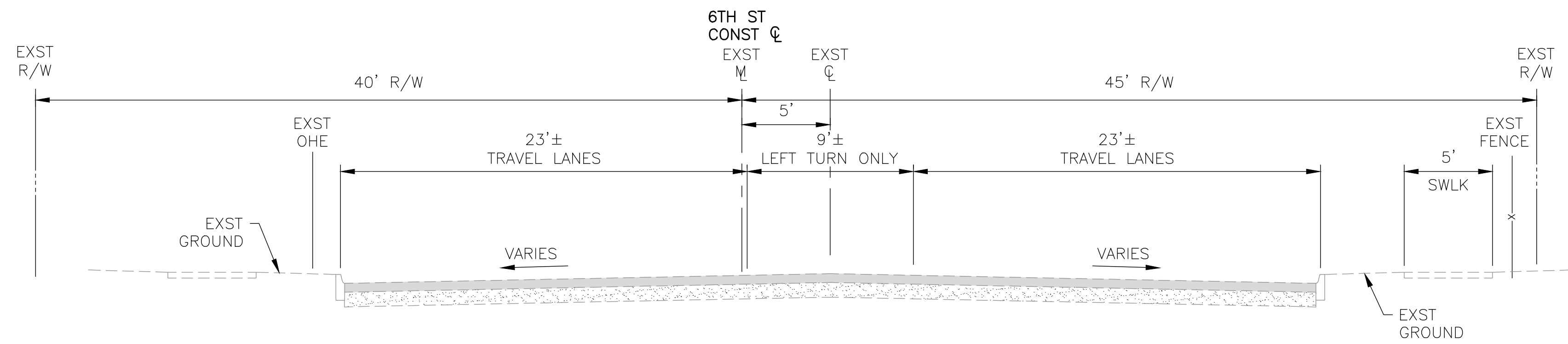
I HEREBY CERTIFY THIS PLAT REPRESENTS A SURVEY MADE BY ME OR UNDER MY DIRECTION AND THAT THE PROPERTY CORNERS AND SURVEY MONUMENTS EXIST AS SHOWN HEREON.

REGISTERED LAND SURVEYOR  
37933  
GENNY WALLACE MARTIN  
AZ R.L.S. # 37933

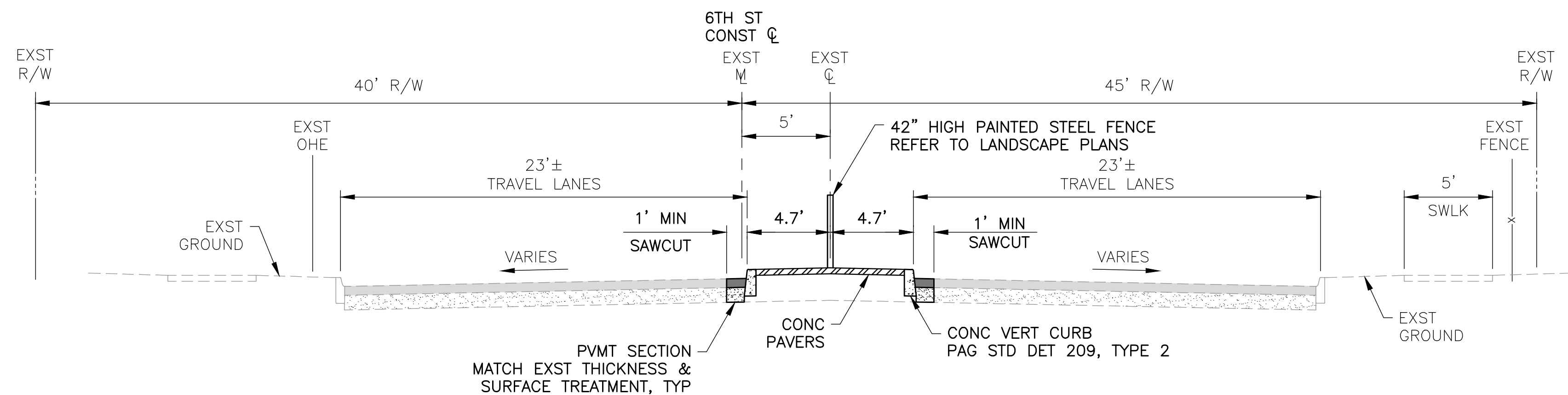
GENNY WALLACE MARTIN AZ R.L.S. # 37933



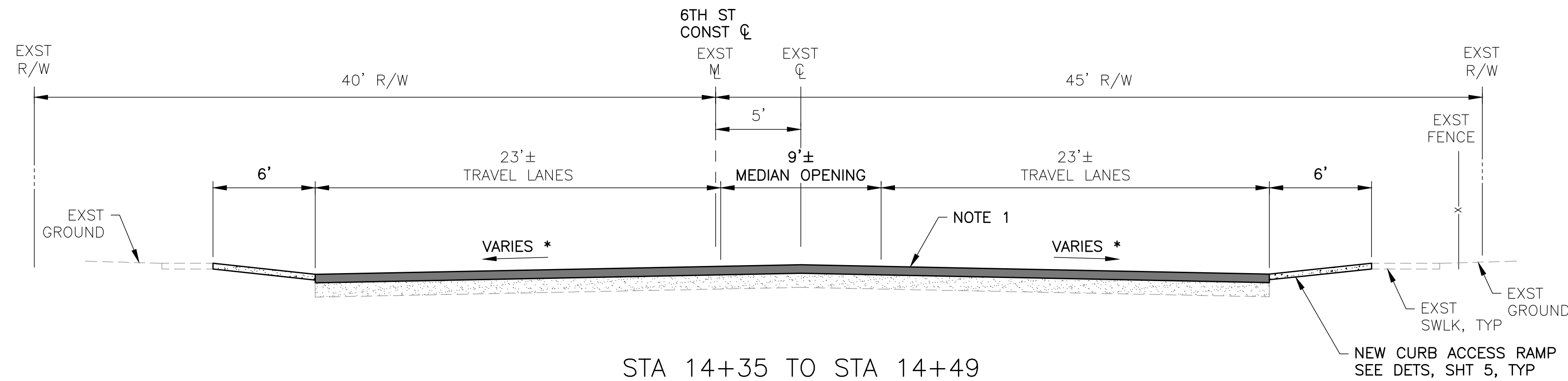




STA 10+00 TO STA 12+49  
STA 16+10.50 TO STA 17+50



STA 12+49 TO STA 14+35  
STA 14+49 TO STA 16+10.50

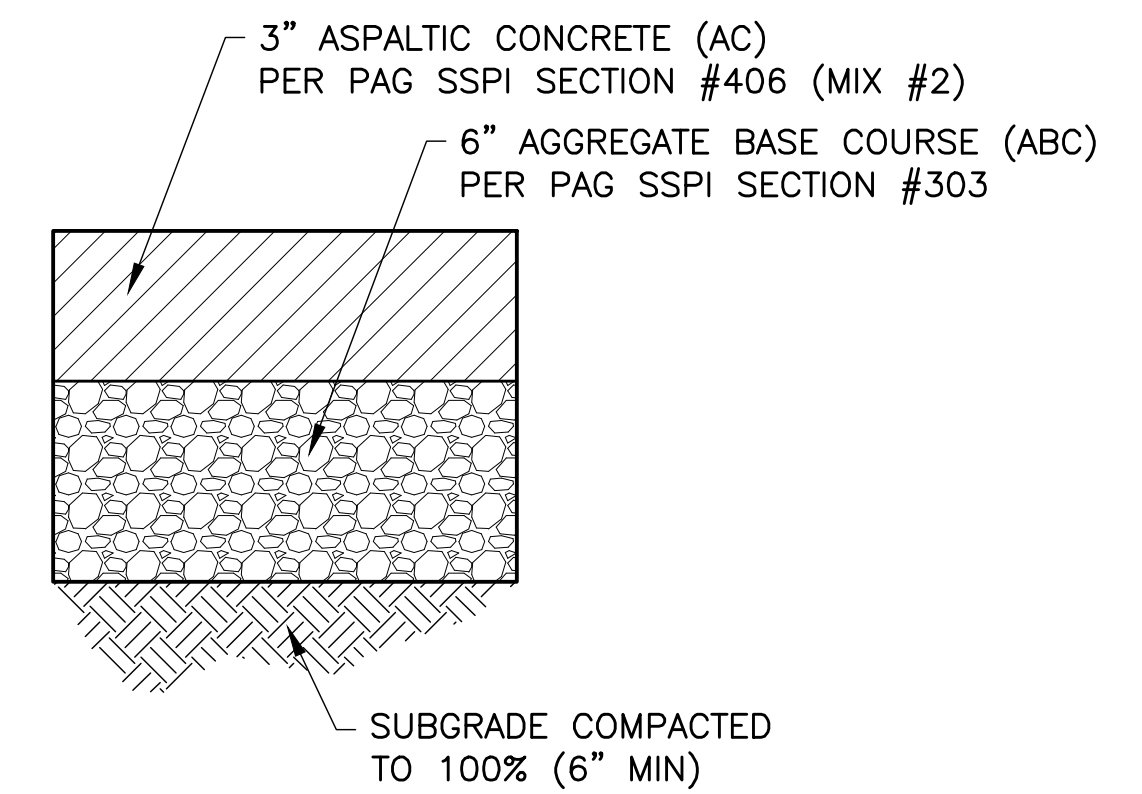


STA 14+35 TO STA 14+49

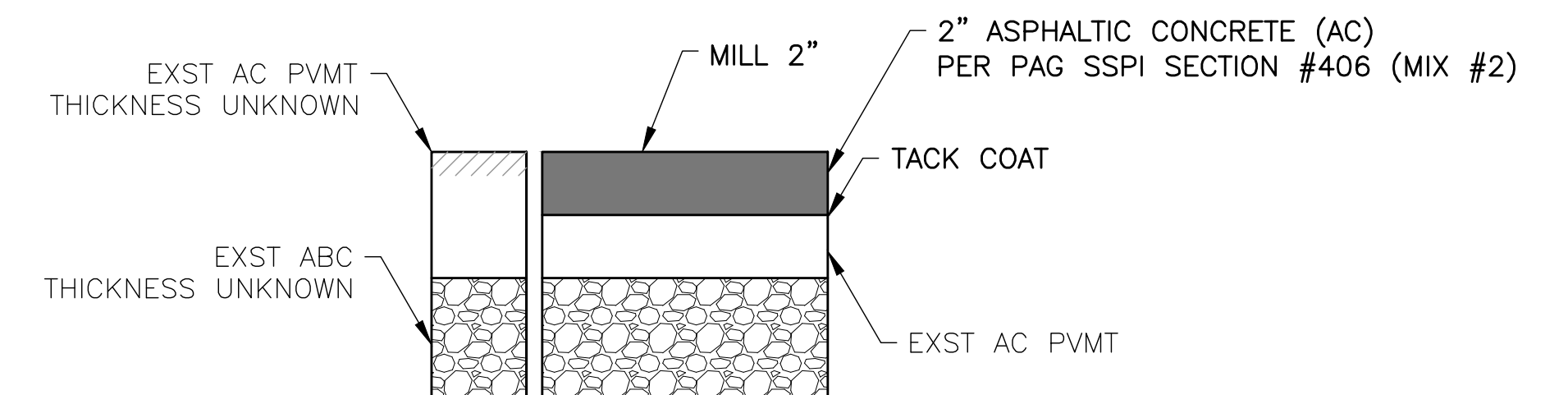
\* MAINTAIN EXST ROADWAY CROSS SLOPE

NOTE 1: MILL & REPLACE 2" PVMT, DET 3 THIS SHEET  
INSTALL STAMPED ASPHALT CROSSWALK  
REFER TO LANDSCAPE PLANS

1 6TH STREET CROSS SECTIONS  
NO SCALE



2 ASPHALT PAVEMENT SECTION  
NO SCALE



3 ASPHALT PAVEMENT OVERLAY SECTION  
NO SCALE

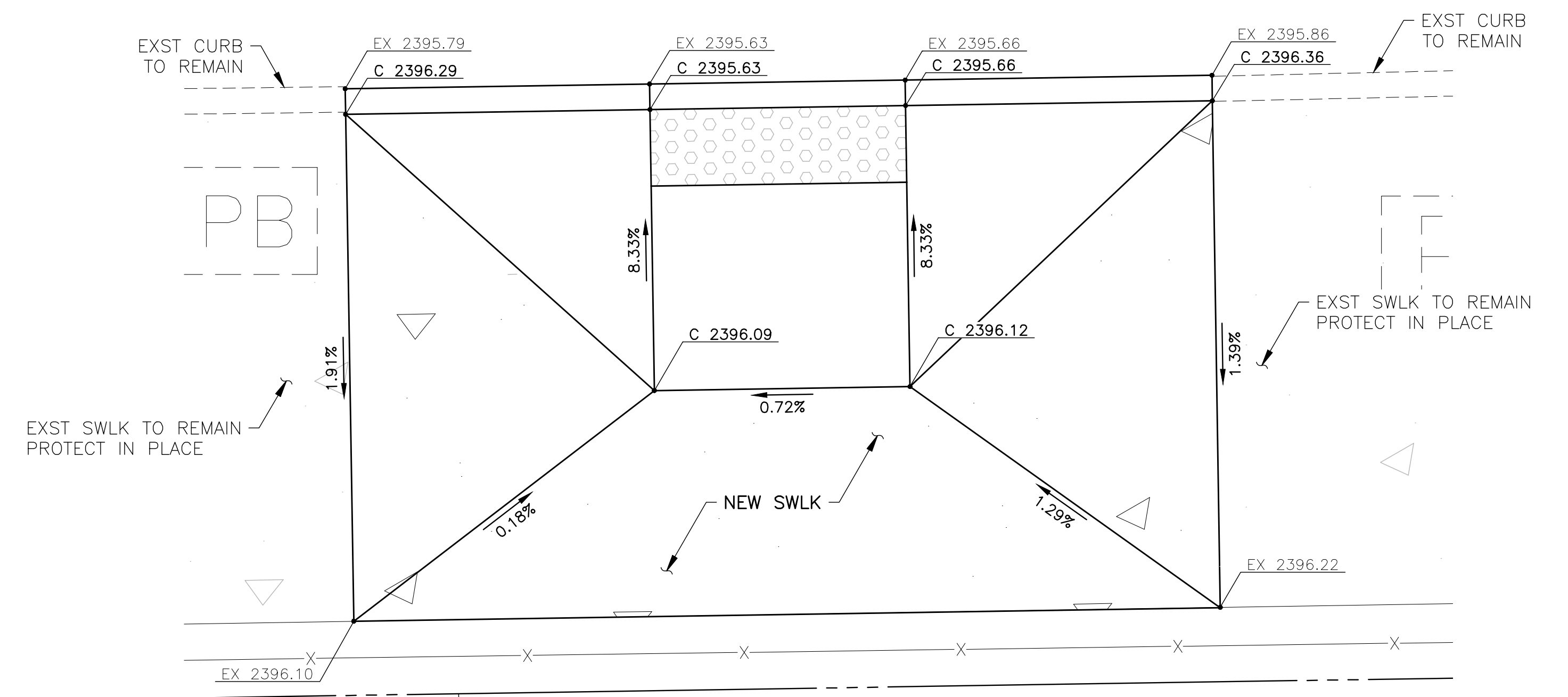
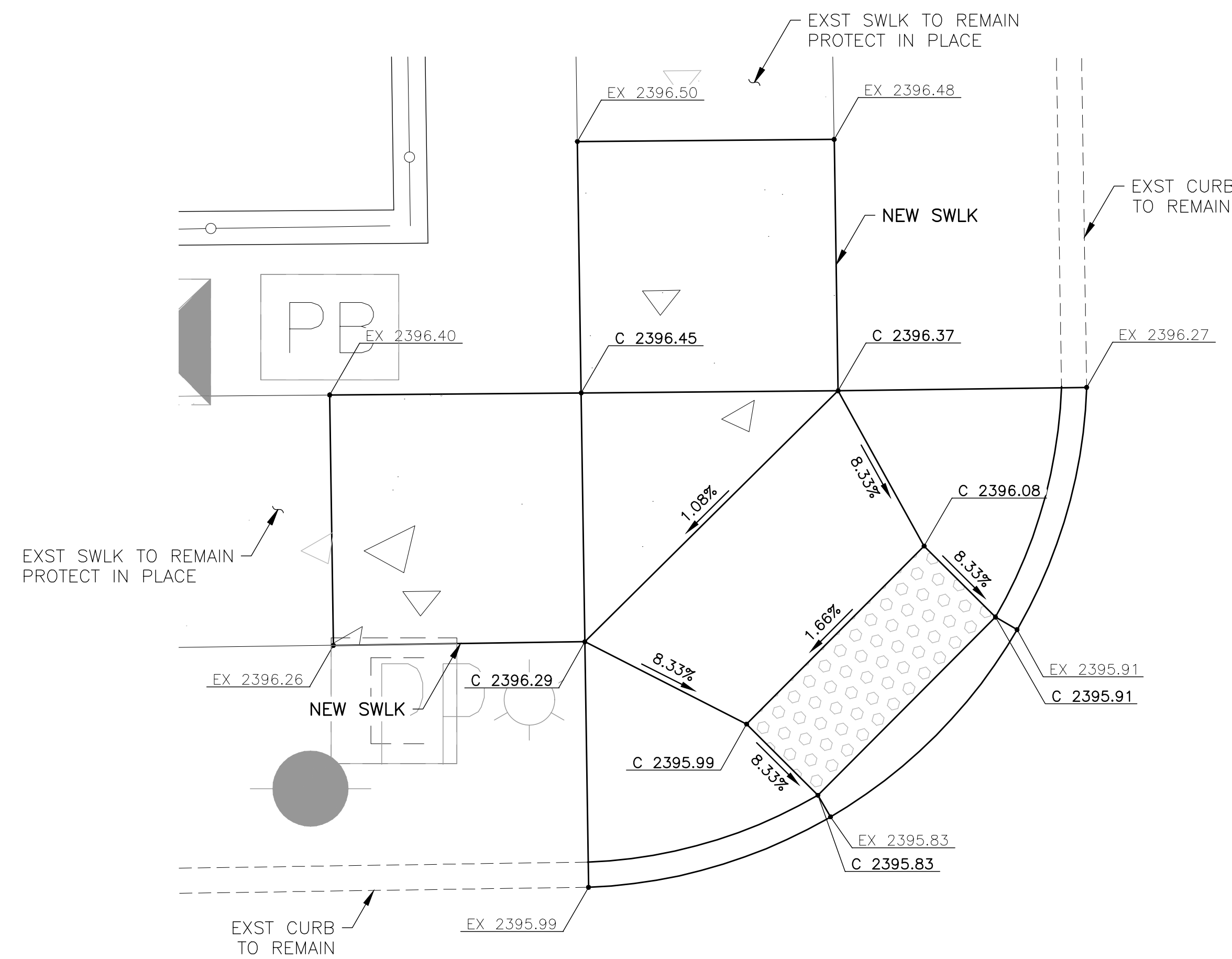
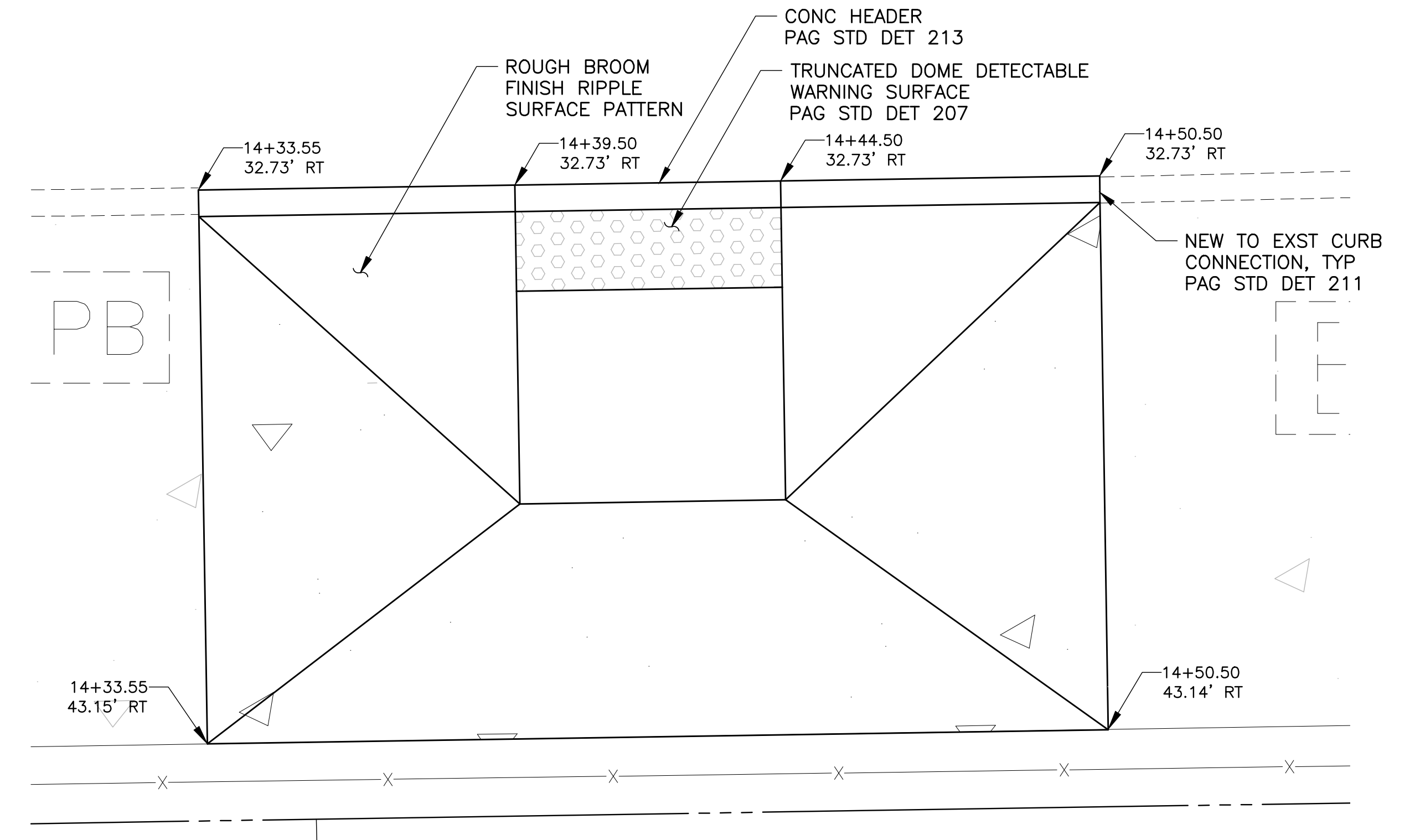
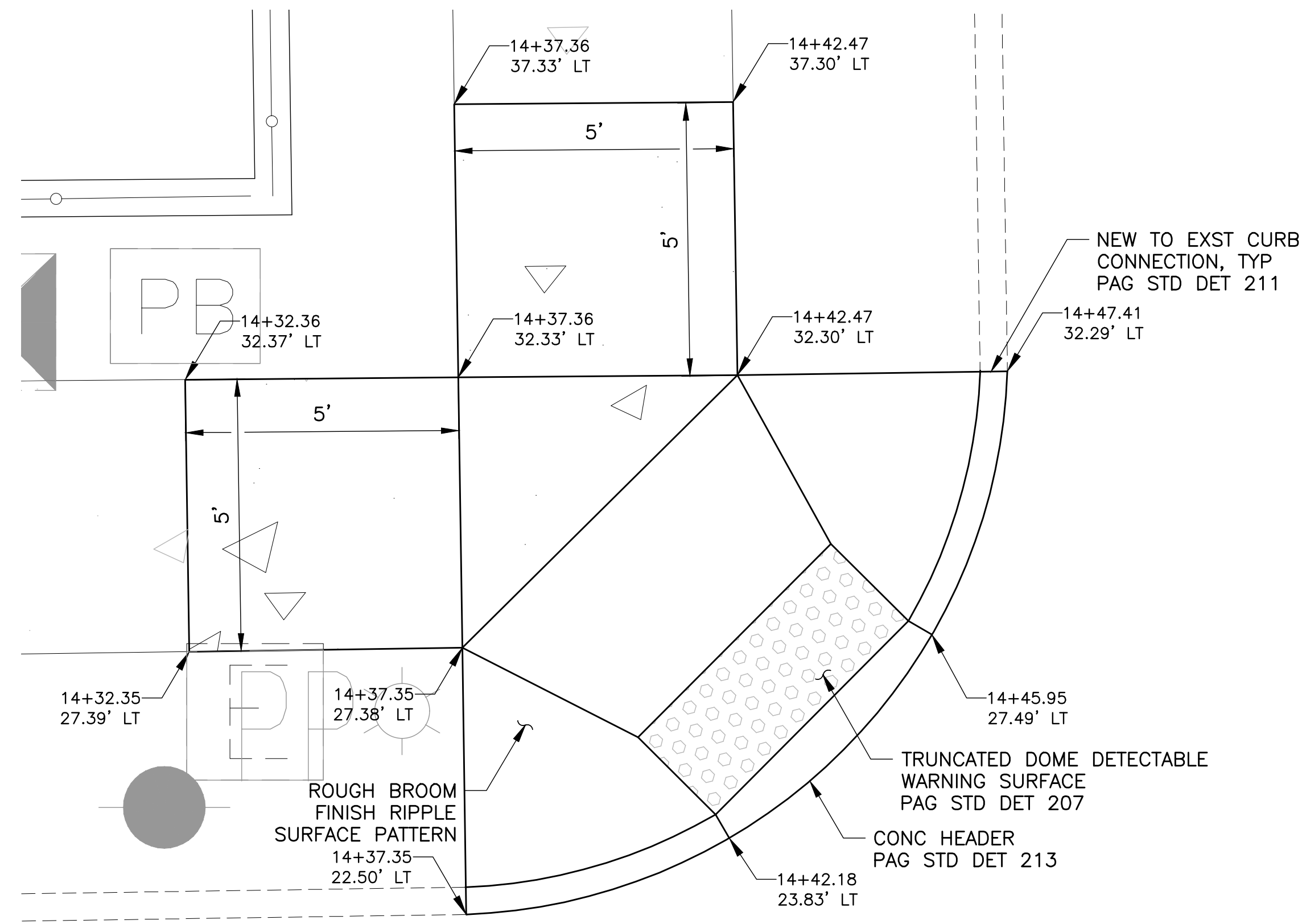
## MISCELLANEOUS DETAILS

Contact Arizona 811 at least two full working days before you begin excavation.  
**ARIZONA 811**  
Call 811 or click Arizona811.com

Dibble Engineering					
177 N. Church Avenue Suite 711 Tucson, AZ 85701 P 520.498.4063					
NO.	DATE	REVISION	BY	CHKD.	APPR.



DEPARTMENT OF TRANSPORTATION/ENGINEERING DIVISION				4 OF 11	
OFFSITE IMPROVEMENTS FOR TUCSON HIGH SCHOOL				11	
	DRWN. BY	DGW	12/19	REF.	SCALE: NONE
	DSGN. BY	GDV	12/19		
	CHKD. BY	GDV	12/19	PLAN NO.	X-XXXX-XXX

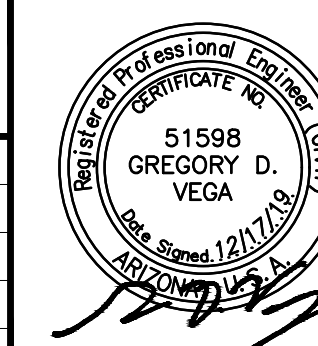


1 NORTH CURB ACCESS RAMP  
NO SCALE

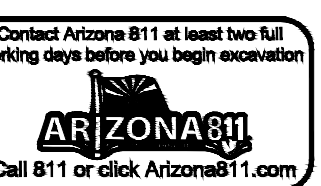
2 SOUTH CURB ACCESS RAMP  
NO SCALE

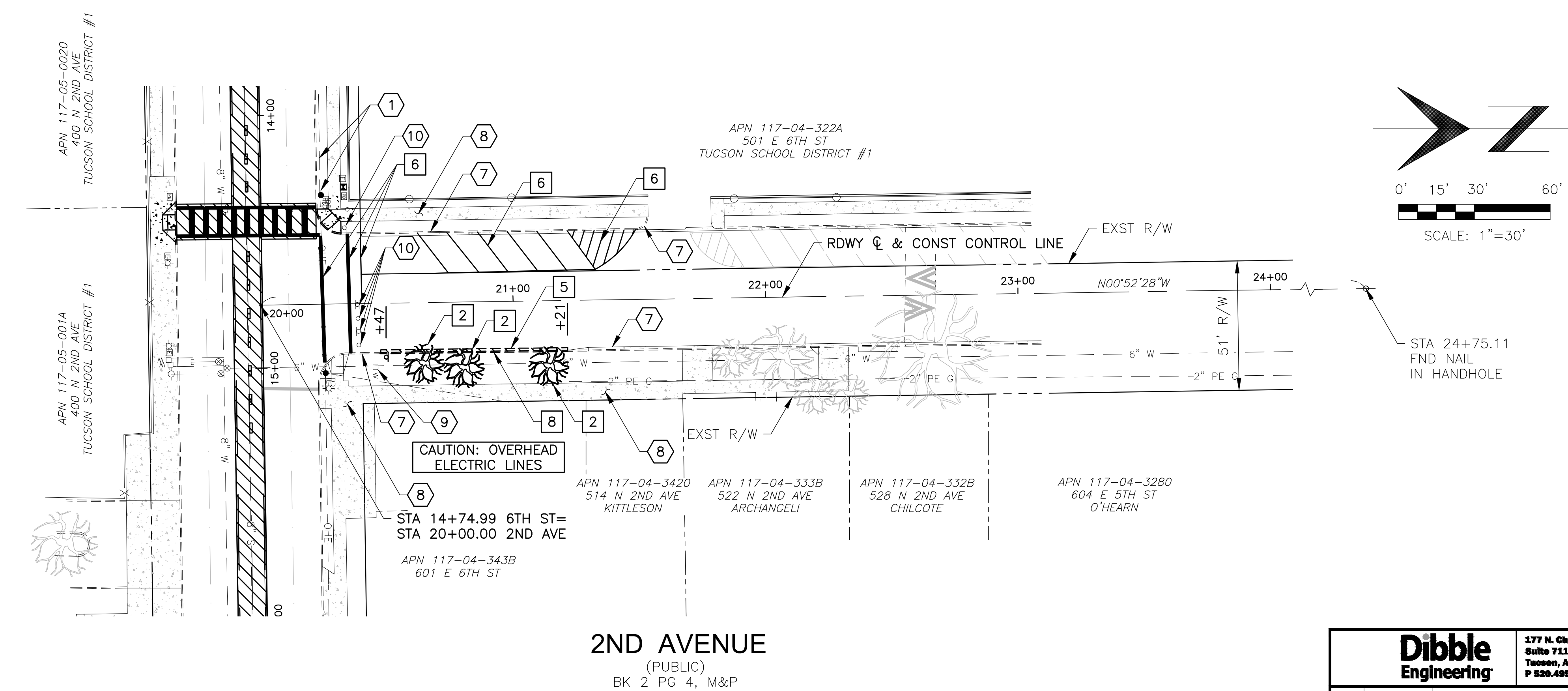
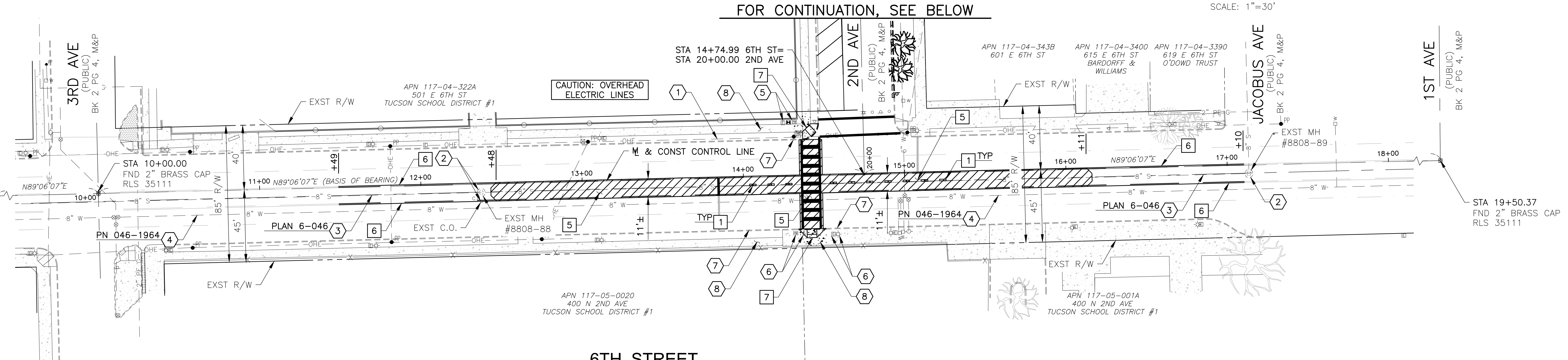
# MISCELLANEOUS DETAILS

Dibble Engineering					
177 N. Church Avenue Suite 711 Tucson, AZ 85701 P 520.498.4063					
NO.	DATE	REVISION	BY	CHKD.	APPR.



DEPARTMENT OF TRANSPORTATION/ENGINEERING DIVISION				5 OF 11	
OFFSITE IMPROVEMENTS FOR TUCSON HIGH SCHOOL				11	
CITY OF TUCSON	DRWN. BY	DGW	12/19	REF.	SCALE: NONE
	DSGN. BY	GDV	12/19		
	CHKD. BY	GDV	12/19	PLAN NO.	X-XXXX-XXX



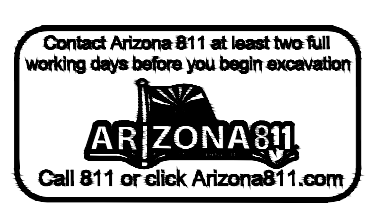


- | REMOVAL NOTES |  |
|---------------|--|
| 1             | REMOVE EXST PLASTIC MEDIAN BARRIERS<br>TYP OF 10 |
| 2             | REMOVE EXST TREE                                 |
| 5             | REMOVE EXST ASPHALT PVMT<br>SEE LEGEND BELOW     |
| 6             | REMOVE PVMT MARKING<br>PAG SPEC SEC 701          |
| 7             | REMOVE ADA ACCESS RAMP                           |
| 8             | REMOVE EXST CURB                                 |

- | REFERENCE NOTES |   |
|-----------------|---|
| 1               | EXST OVERHEAD ELEC LINES/POLE TO REMAIN<br>PROTECT IN PLACE |
| 2               | EXST SEWER MANHOLE/CLEAN OUT<br>PROTECT IN PLACE            |
| 3               | EXST SEWER LINE<br>PROTECT IN PLACE                         |
| 4               | EXST WATER LINE<br>PROTECT IN PLACE                         |
| 5               | EXST TRAFFIC BOX/CABINET<br>PROTECT IN PLACE                |
| 6               | EXST LIGHT POLE & PULL BOX<br>PROTECT IN PLACE              |
| 7               | EXST CONC CURB<br>PROTECT IN PLACE                          |
| 8               | EXST CONC SWLK<br>PROTECT IN PLACE                          |
| 9               | EXST WATER METER<br>PROTECT IN PLACE                        |
| 10              | EXST SIGN & POST<br>PROTECT IN PLACE                        |

- | LEGEND                                   |  |
|--|--|
| ASPHALT PAVEMENT REMOVAL<br>(FULL-DEPTH) |  |
| CONCRETE REMOVAL                         |  |

FOR REFERENCE ONLY



### DEMOLITION PLAN

<div><div>Dibble Engineering</div></div>		177 N. Church Avenue Suite 711 Tucson, AZ 85701 P 520.498.4065		<div><div><div>Professional Engineer CERTIFICATE #51598 GREGORY D. VEGA Exp. Date 12/19/2023 State of Arizona</div><div></div></div></div>		DEPARTMENT OF TRANSPORTATION/ENGINEERING DIVISION				6 OF 11	
						OFFSITE IMPROVEMENTS FOR TUCSON HIGH SCHOOL					
NO.	DATE	REVISION		BY	CHKD.	APPR.	<div><div><div>CITY OF TUCSON</div></div></div>	DRWN. BY DGW	12/19	REF. _____ SCALE: 1"=30'	
								DSGN. BY GDV	12/19	_____	
								CHKD. BY GDV	12/19	PLAN NO. X-XXXX-XXX	



CONSTRUCTION NOTES

- 1 ASPHALT PVMT  
3"AC/6"ABC/NATIVE COMPACTED TO 100% OR  
MATCH EXST PVMT SECTION, WHICHEVER IS  
GREATER. PAG SPEC SECTS 303 & 406
- 2 CURB ACCESS RAMP  
DET 1, SHT 5
- 3 CURB ACCESS RAMP  
DET 2, SHT 5
- 4 CONC VERT CURB  
PAG STD DET 209, TYPE 2 (H=6")
- 5 CONC CURB, NEW TO EXST CONNECTION  
PAG STD DET 211
- 6 REMOVABLE POST BARRICADE  
PAG STD DET 107
- 7 42" HIGH PAINTED STEEL FENCE  
REFER TO LANDSCAPE PLANS
- 8 RAISED CONCRETE PAVER MEDIAN  
REFER TO LANDSCAPE PLANS
- 9 MILL & REPLACE 2" PVMT  
DET 3, SHT 4  
INSTALL STAMPED ASPHALT CROSSWALK  
REFER TO LANDSCAPE PLANS

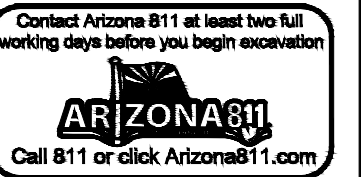
REFERENCE NOTES

- 1 EXST OVERHEAD ELEC LINES/POLE TO REMAIN  
PROTECT IN PLACE
- 2 EXST SEWER MANHOLE/CLEAN OUT  
PROTECT IN PLACE
- 3 EXST SEWER LINE  
PROTECT IN PLACE
- 4 EXST WATER LINE  
PROTECT IN PLACE
- 5 EXST TRAFFIC BOX/CABINET  
PROTECT IN PLACE
- 6 EXST LIGHT POLE & PULL BOX  
PROTECT IN PLACE
- 7 EXST CONC CURB  
PROTECT IN PLACE
- 8 EXST CONC SWLK  
PROTECT IN PLACE
- 9 EXST WATER METER  
PROTECT IN PLACE
- 10 EXST SIGN & POST  
PROTECT IN PLACE

LEGEND

ASPHALT PAVEMENT

FOR REFERENCE ONLY



GRADING & PAVING PLAN

DEPARTMENT OF TRANSPORTATION/ENGINEERING DIVISION

OFFSITE IMPROVEMENTS FOR  
TUCSON HIGH SCHOOL

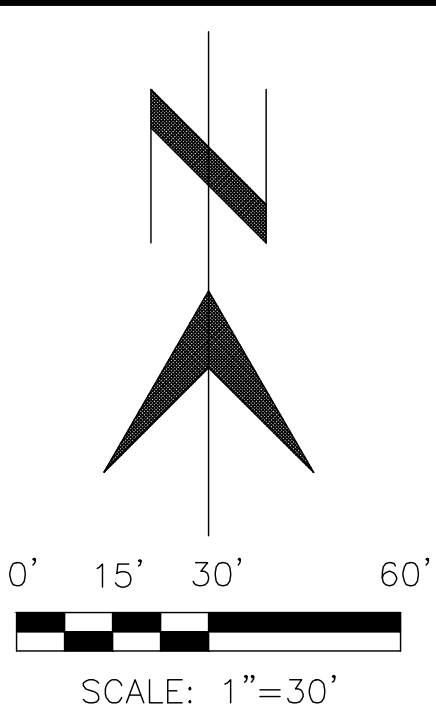


DRWN. BY	DGW	12/19	REF.	SCALE: 1"=30'
DSGN. BY	GDV	12/19		
CHKD. BY	GDV	12/19	PLAN NO.	X-XXXX-XXX

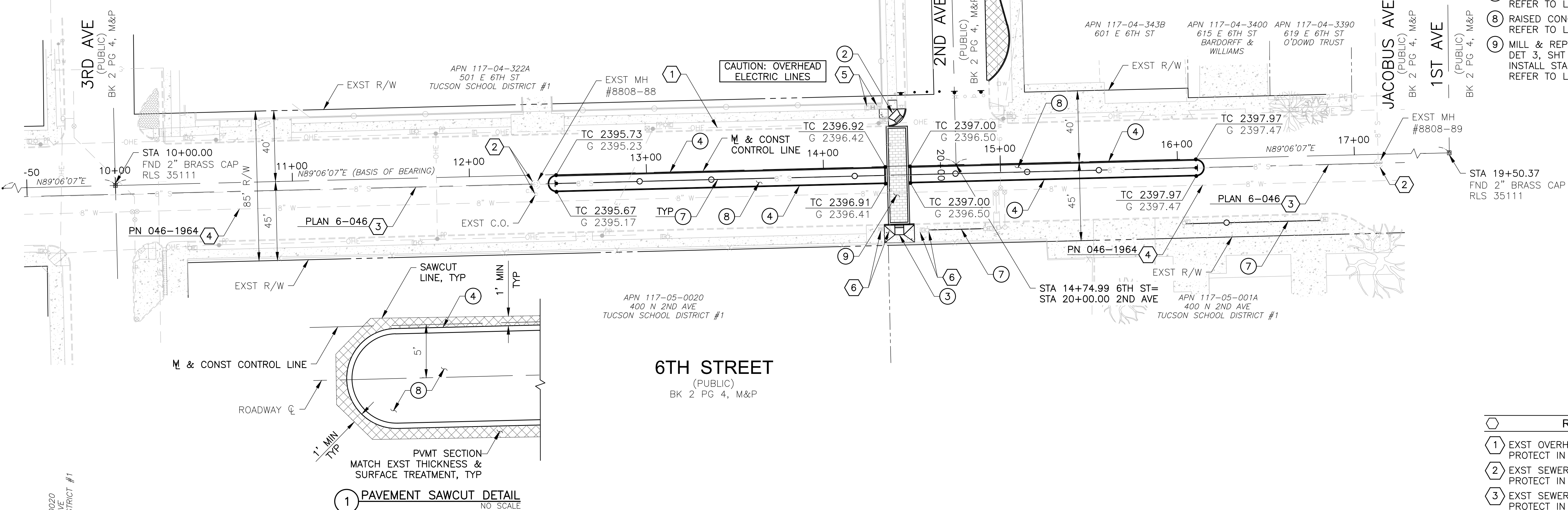
<b>Dibble Engineering</b>			<b>177 N. Church Avenue Suite 711 Tucson, AZ 85701 P 520.495.4065</b>		
<b>NO.</b>	<b>DATE</b>	<b>REVISION</b>	<b>BY</b>	<b>CHKD.</b>	<b>APPR.</b>



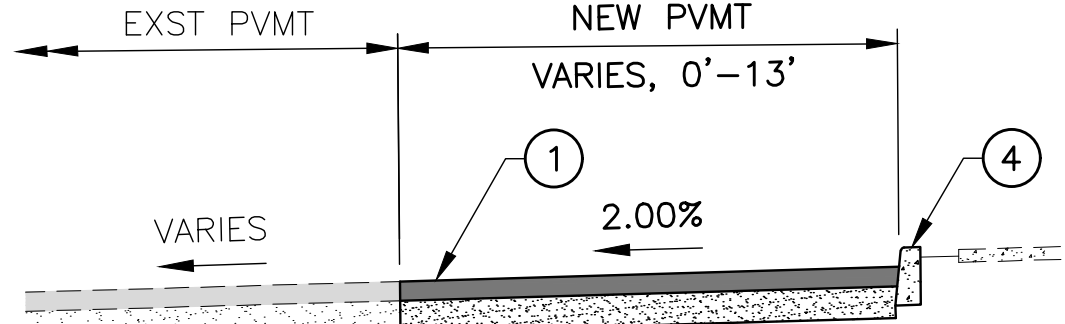
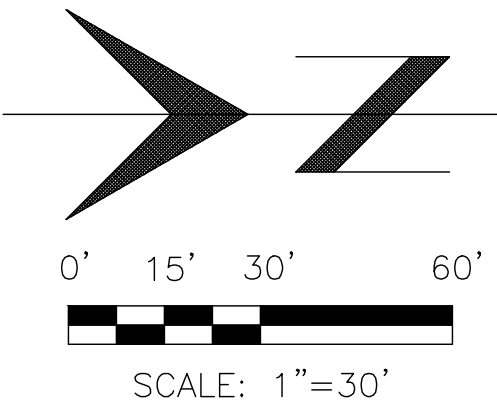
DRWN. BY	DGW	12/19	REF.	SCALE: 1"=30'
DSGN. BY	GDV	12/19		
CHKD. BY	GDV	12/19	PLAN NO.	X-XXXX-XXX



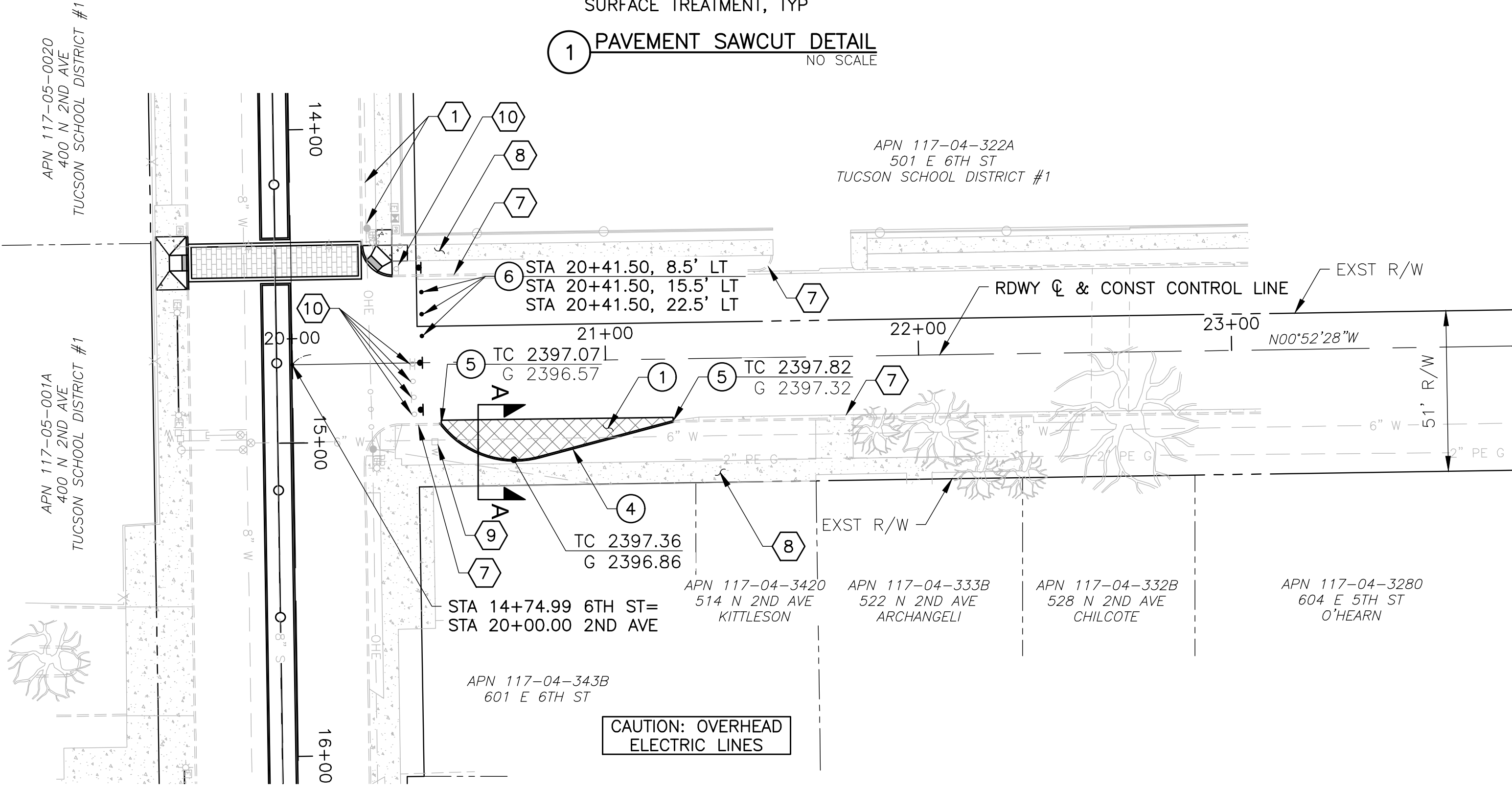
FOR CONTINUATION, SEE BELOW



1 PAVEMENT SAWCUT DETAIL  
NO SCALE



1 PAVEMENT SECTION A-A  
NO SCALE

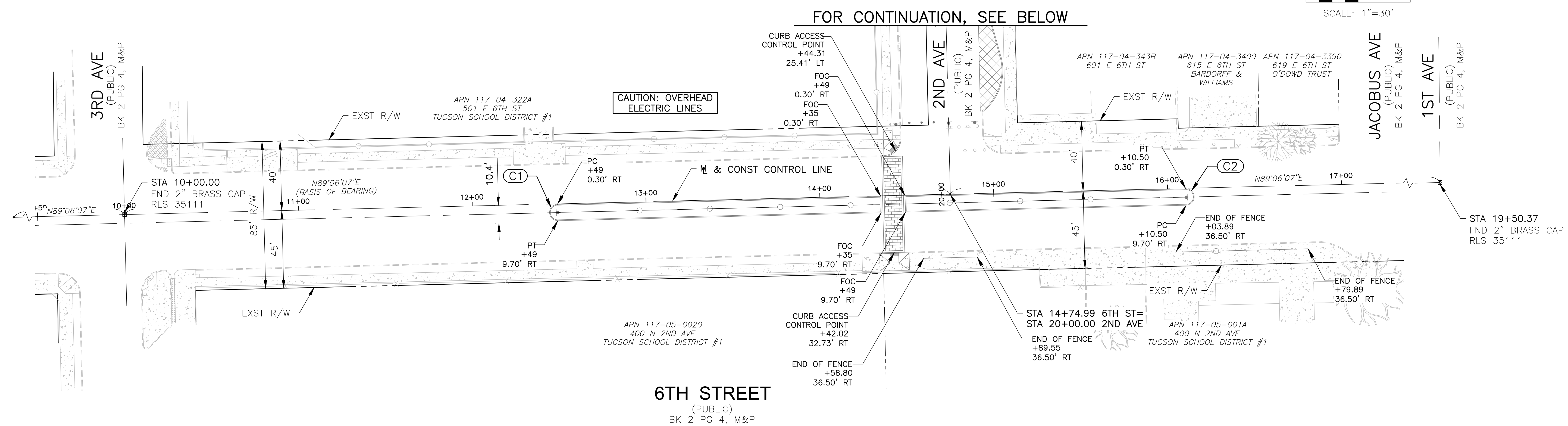
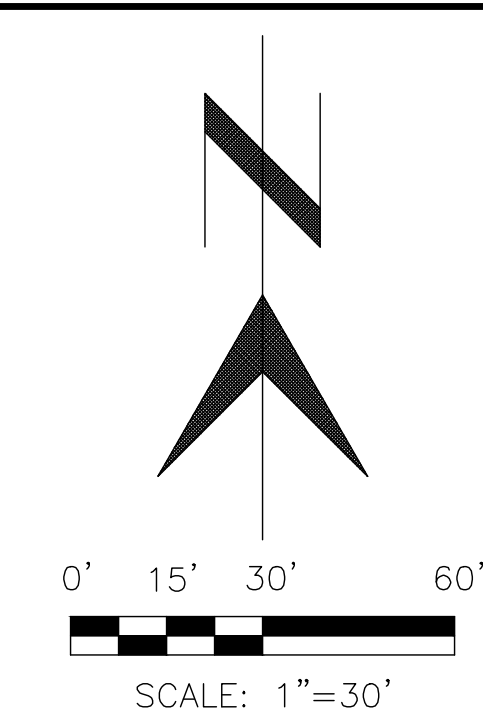


2ND AVENUE  
(PUBLIC)  
BK 2 PG 4, M&P

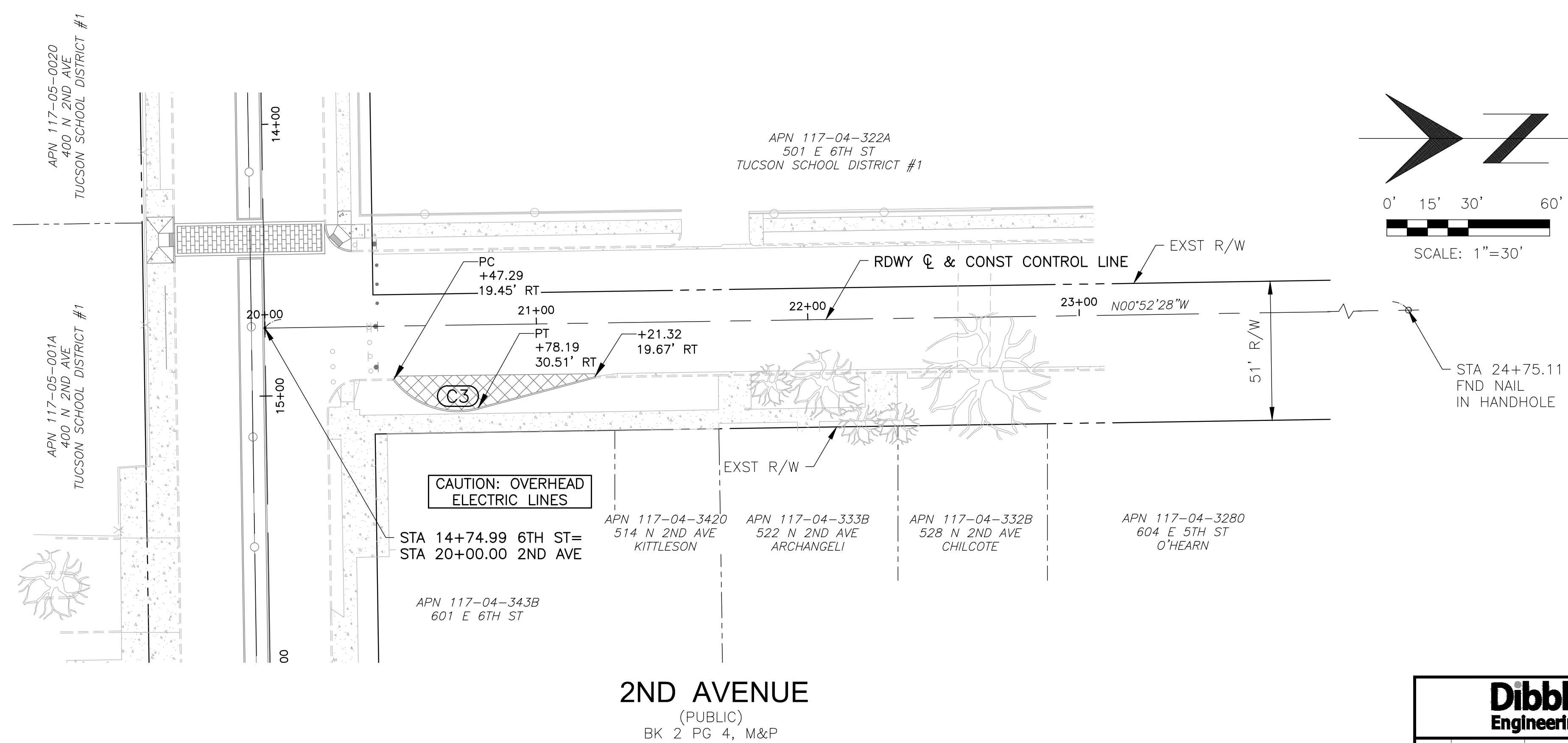
<b>Dibble Engineering</b>			<b>177 N. Church Avenue Suite 711 Tucson, AZ 85701 P 520.495.4065</b>		
<b>NO.</b>	<b>DATE</b>	<b>REVISION</b>	<b>BY</b>	<b>CHKD.</b>	<b>APPR.</b>



DRWN. BY	DGW	12/19	REF.	SCALE: 1"=30'
DSGN. BY	GDV	12/19		
CHKD. BY	GDV	12/19	PLAN NO.	X-XXXX-XXX



CURVE TABLE				
CURVE	Δ	LENGTH	RADIUS	TANGENT
C1	180° 00' 00"	14.77'	4.70'	N/A
C2	180° 00' 00"	14.77'	4.70'	N/A
C3	67° 36' 00"	34.81'	29.50'	19.75'



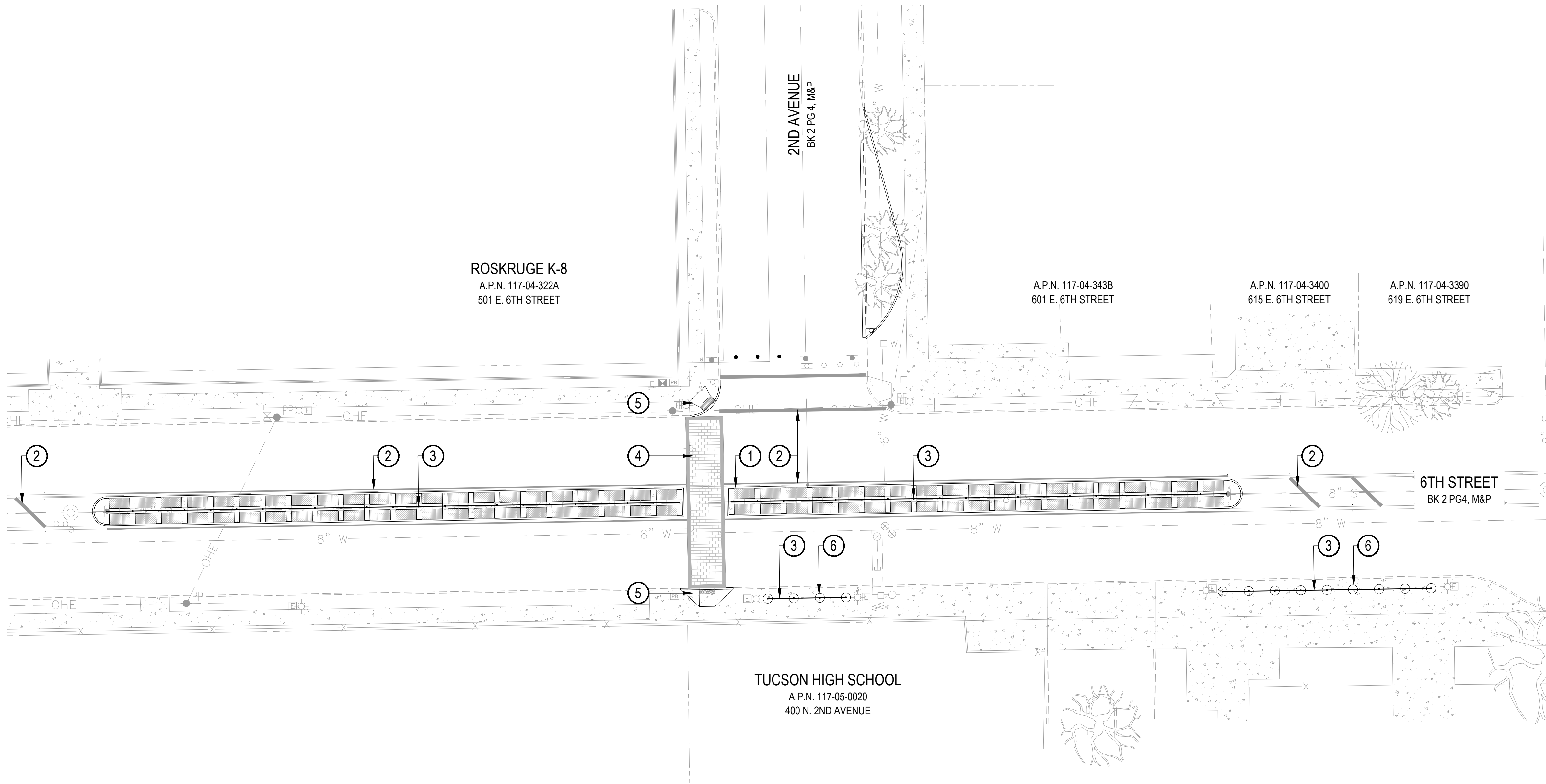
HORIZONTAL CONTROL PLAN

<b>Dibble Engineering</b> 177 N. Church Avenue Suite 711 Tucson, AZ 85701 P 520.498.4063			DEPARTMENT OF TRANSPORTATION/ENGINEERING DIVISION		8 OF 11						
			OFFSITE IMPROVEMENTS FOR TUCSON HIGH SCHOOL								
NO.	DATE	REVISION	BY	CHKD.	APPR.		DRWN. BY	DGW	12/19	REF.	SCALE: 1"=30'
							DSGN. BY	GDV	12/19		
							CHKD. BY	GDV	12/19	PLAN NO.	X-XXXX-XXX



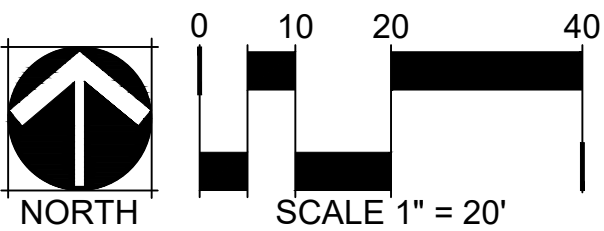






HARDSCAPE KEYNOTES			
KEYNOTE	DESCRIPTION	DETAIL	QTY
①	CONCRETE CURB	REFER TO CIVIL PLANS	--
②	PAINTED STRIPING	REFER TO CIVIL PLANS	--
③	42" HIGH PAINTED STEEL FENCE	1/11	438 LF
④	STAMPED ASPHALT CROSSWALK	3/11	1 EA
⑤	SIDEWALK RAMP	REFER TO CIVIL PLANS	--
⑥	FENCE POST AND FOOTING AT EXISTING SIDEWALK	1/11	13 EA

SURFACING SCHEDULE			
SYMBOL	DESCRIPTION	DETAIL	QTY
	STAMPED ASPHALT FIELD PATTERN: STREETPRINT® RUNNING BOND 1' X 2' COLOR: STREETBOND® ROADSTER RED CONTACT: TUCSON ASPHALT CONTRACTORS, INC. (520) 292-1125 NOTE: REFER TO MANUFACTURER'S RECOMMENDATIONS FOR INSTALLATION	3/11	533 SF
	STAMPED ASPHALT BORDER PATTERN: N/A COLOR: STREETBOND® PEWTER CONTACT: TUCSON ASPHALT CONTRACTORS, INC. (520) 292-1125 NOTE: REFER TO MANUFACTURER'S RECOMMENDATIONS FOR INSTALLATION	3/11	130 SF
	CONCRETE FINISH: MEDIUM BROOM COLOR: NATURAL GRAY	4/11	1,143 SF
	CONCRETE PAVERS MANUFACTURER: ACKER-STONE STYLE: 6 CM HOLLAND COLOR: DESERT BLEND PATTERN: RUNNING BOND CONTACT: BORDER CONSTRUCTION (520) 623-4100	5/11	1,804 SF



HARDSCAPE PLAN

**NORRIS DESIGN**  
Planning | Landscape Architecture | Branding

418 North Toole Avenue  
Tucson, AZ 85701  
P 520.622.9565  
www.norris-design.com

**Dibble Engineering**

177 N. Church Avenue  
Suite 711  
Tucson, AZ 85701  
P 520.498.4065

NO.	DATE	REVISION	BY	CHKD.	APPR.

**CITY OF TUCSON**

DEPARTMENT OF TRANSPORTATION/ENGINEERING DIVISION

OFFSITE IMPROVEMENTS FOR  
TUCSON HIGH SCHOOL

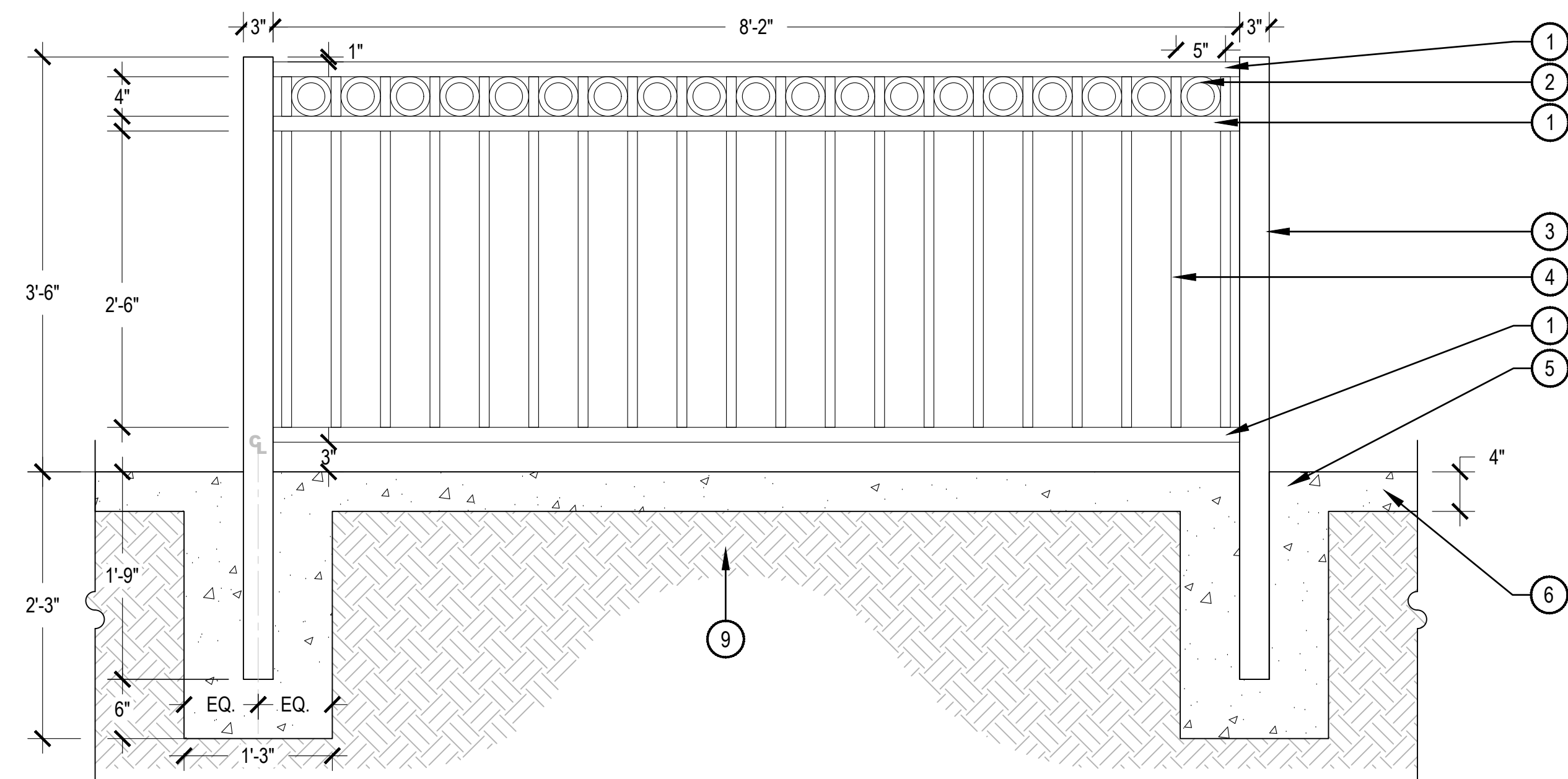
10 OF 11

DRWN. BY MS,TP	12/19	REF.	SCALE:
DSGN. BY MS,TP	12/19		
CHKD. BY JK	12/19	PLAN NO.	X-XXXX-XXX

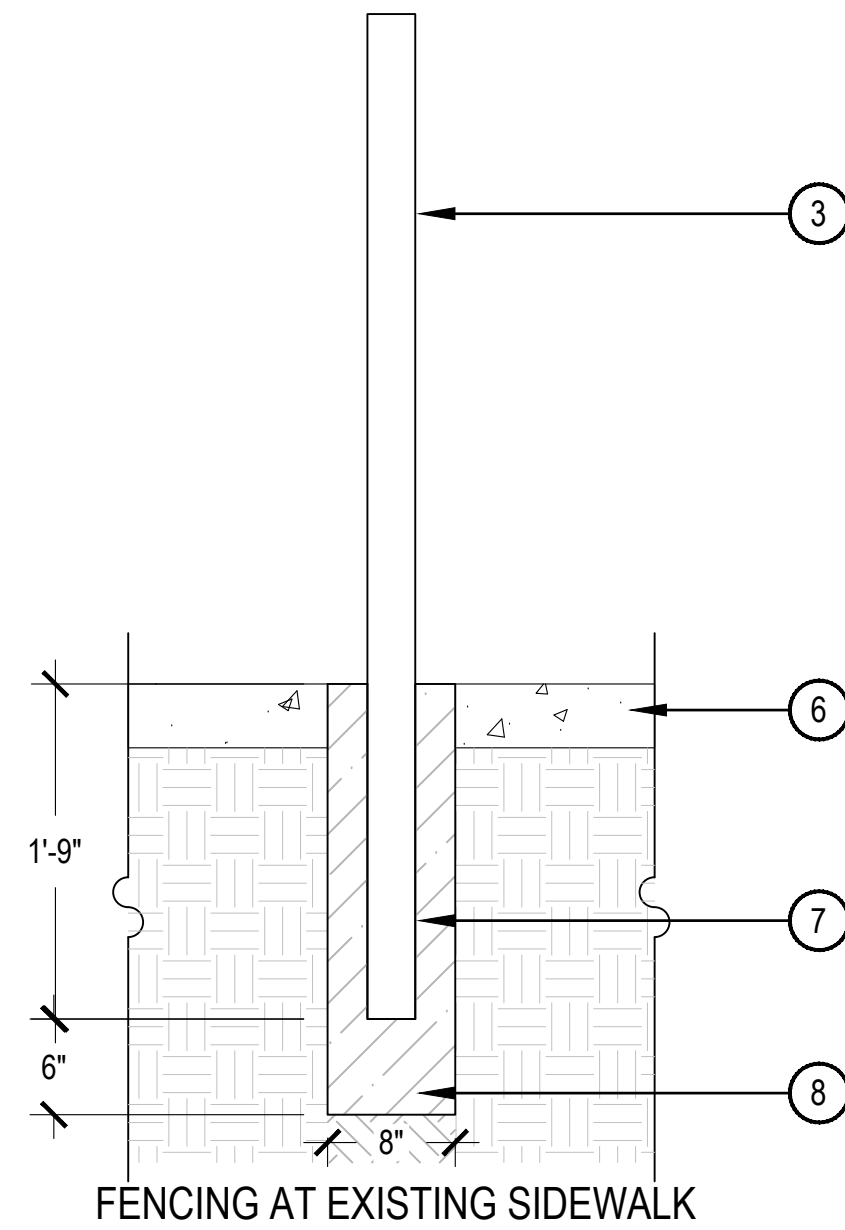
Contact Arizona 811 at least two full working days before you begin excavation

Call 811 or click Arizona811.com





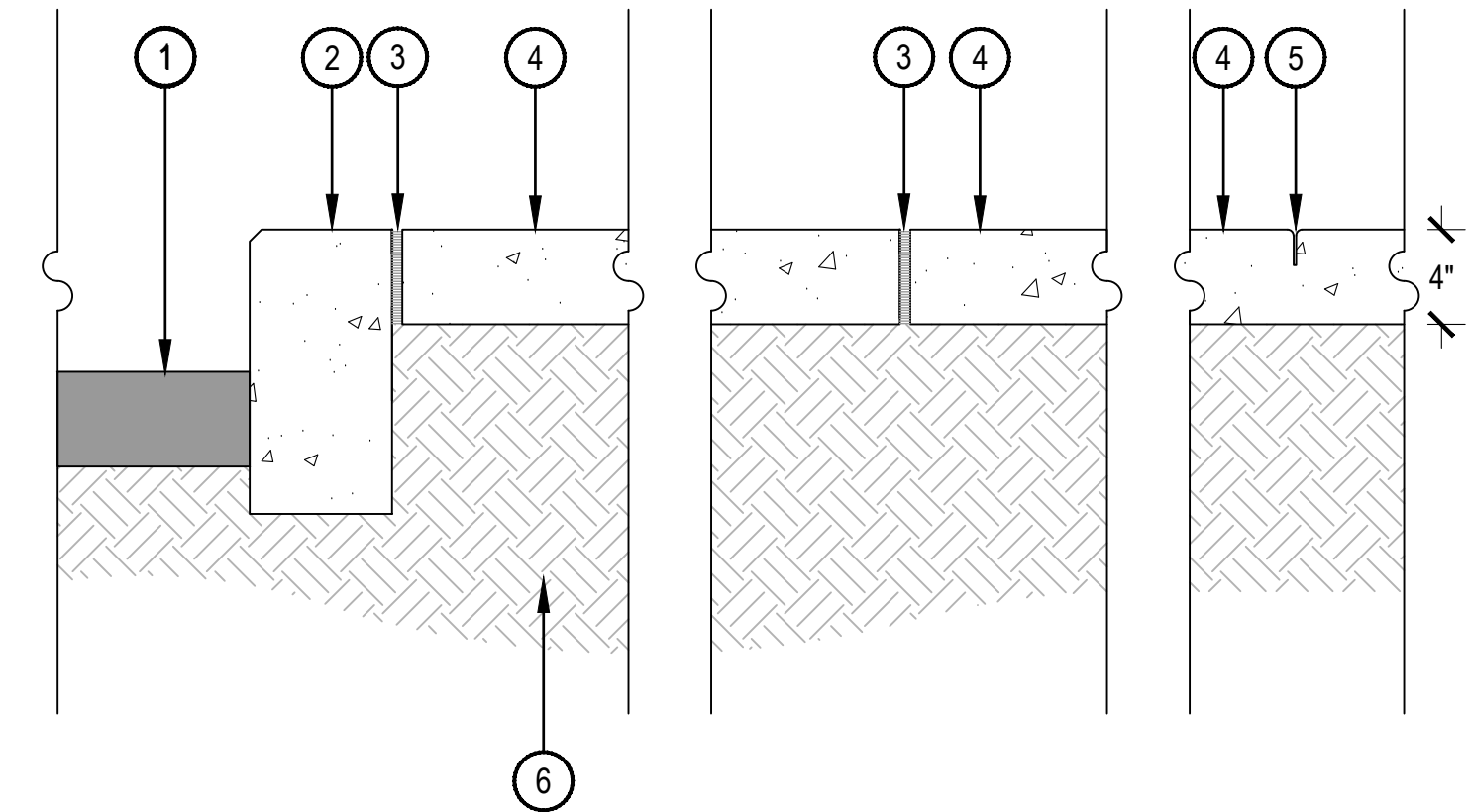
1 42" HIGH PAINTED STEEL FENCE



FENCING AT EXISTING SIDEWALK

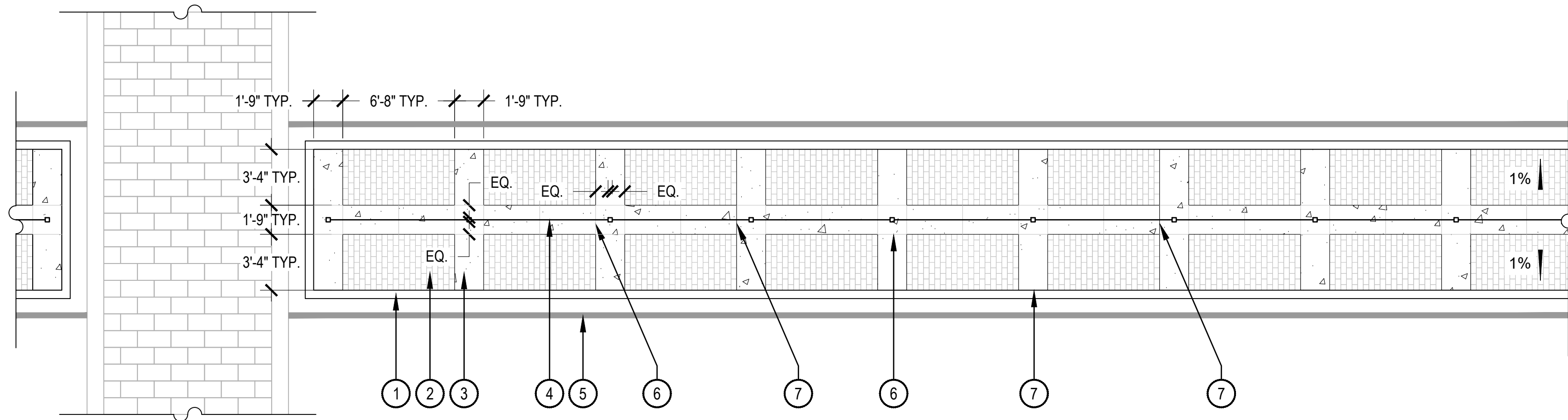
- 1 1-1/2" SQUARE TUBE RAIL
- 2 4" DIAMETER SQUARE TUBE STEEL RING
- 3 3" SQUARE TUBE POST - CENTER IN FOOTING
- 4 1" SQUARE TUBE PICKET, SPACED 5' ON CENTER
- 5 CONCRETE FOOTING
- 6 4" THICK 2,500 PSI CONCRETE PAVING, REFER TO SURFACING SCHEDULE
- 7 8" CORE DRILL, FILL AROUND POST WITH NON-SHRINK GROUT
- 8 SUBGRADE COMPACTED TO 95% STANDARD PROCTOR DENSITY

NOTES:  
1. ALL STEEL TO BE PAINTED TO MATCH TUCSON HIGH RED. CONTRACTOR TO SUBMIT SAMPLE PRIOR TO PAINTING.



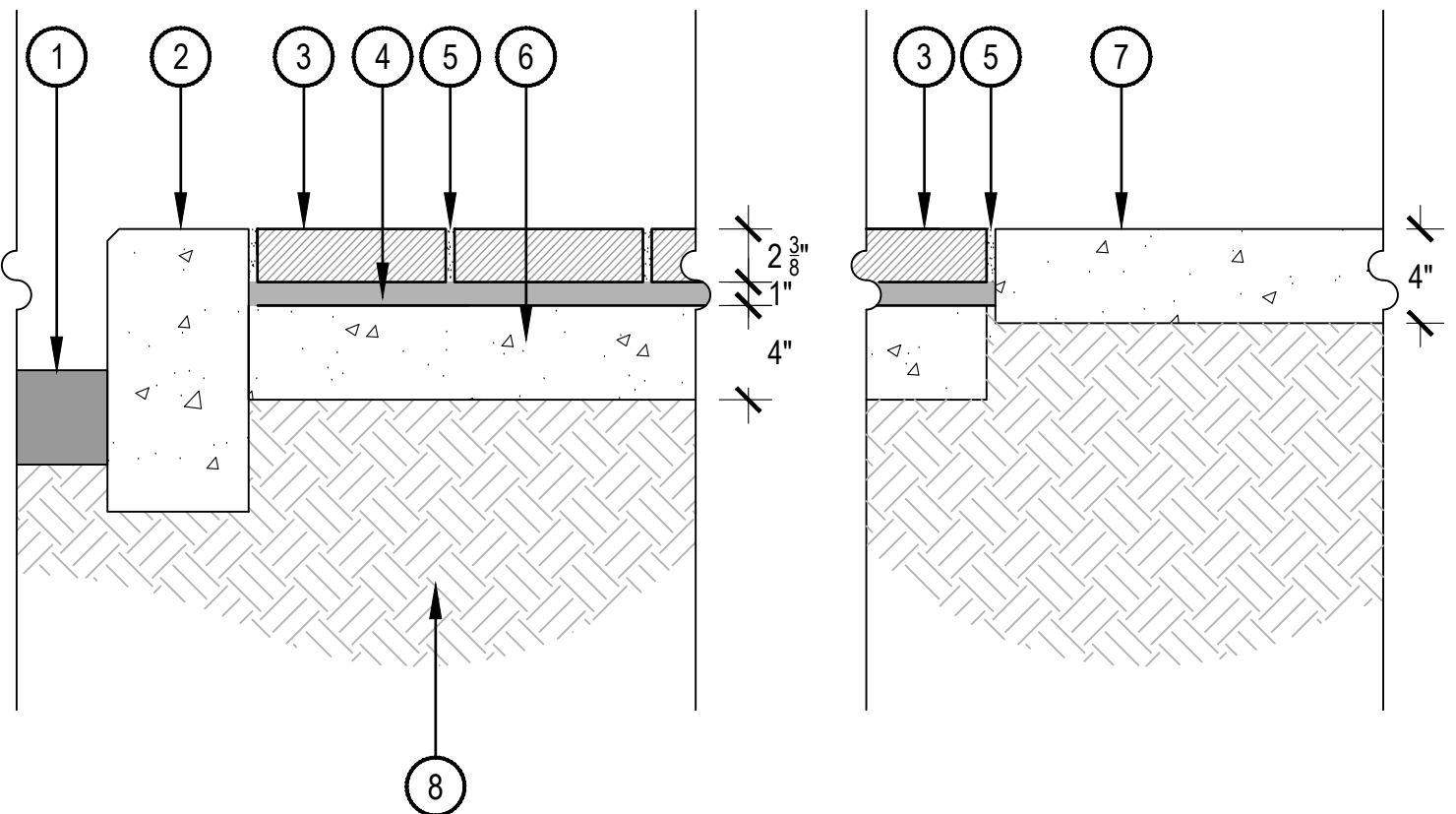
4 CONCRETE PAVING AT MEDIAN

- 1 ASPHALT PER CIVIL PLANS
- 2 CURB PER CIVIL PLANS
- 3 FIBER EXPANSION JOINT WITH TRAFFIC SEALANT
- 4 4" THICK 2,500 PSI CONCRETE PAVING, REFER TO SURFACING SCHEDULE
- 5 TOOLED JOINT, 1/4" RADIUS.
- 6 SUBGRADE COMPACTED TO 95% STANDARD PROCTOR DENSITY



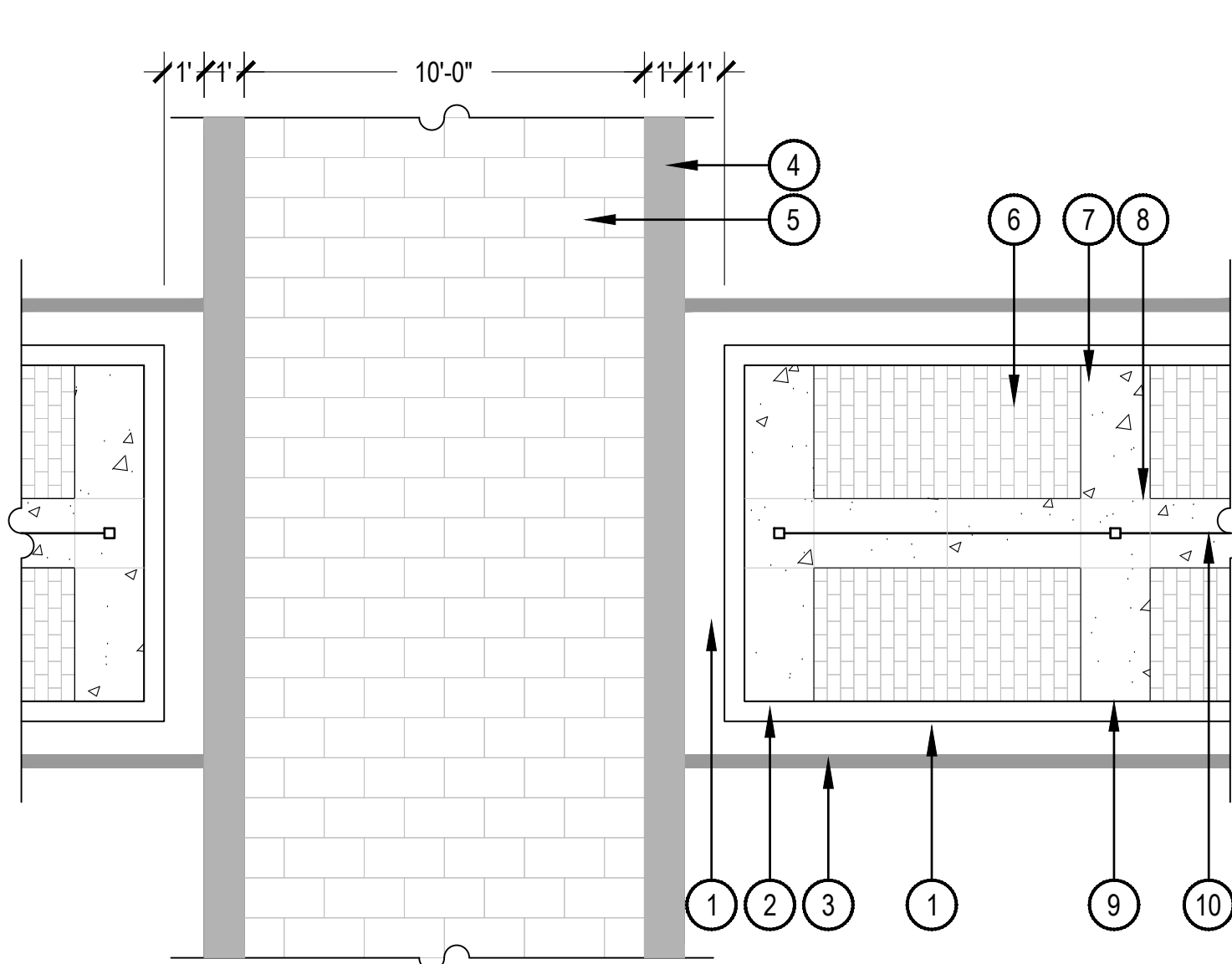
2 MEDIAN & STAMPED ASPHALT CROSSWALK

- 1 CURB PER CIVIL PLANS
- 2 CONCRETE PAVERS SET PERPENDICULAR TO 6TH STREET, REFER TO SURFACING SCHEDULE
- 3 4" THICK 2,500 PSI CONCRETE PAVING, REFER TO SURFACING SCHEDULE
- 4 42" HIGH PAINTED STEEL FENCE, REFER TO DETAIL 1/10
- 5 STRIPING PER CIVIL PLANS
- 6 SCORE JOINT TYP., REFER TO DETAIL 4/10
- 7 EXPANSION JOINT TYP., REFER TO DETAIL 4/10



5 CONCRETE PAVERS AT MEDIAN

- 1 ASPHALT PER CIVIL PLANS
- 2 CURB PER CIVIL PLANS
- 3 CONCRETE PAVERS - REFER TO SURFACING SCHEDULE
- 4 MORTAR BED AT 1" DEPTH
- 5 SAND SWEEP JOINTS
- 6 4" THICK 2,500 PSI CONCRETE BASE
- 7 4" THICK 2,500 PSI CONCRETE PAVING, REFER TO SURFACING SCHEDULE
- 8 SUBGRADE COMPACTED TO 95% STANDARD PROCTOR DENSITY

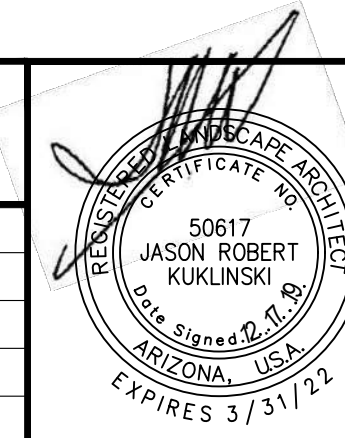


3 ENLARGEMENT OF MEDIAN AND STAMPED ASPHALT CROSSWALK

- 1 STANDARD BLACK ASPHALT PER CIVIL PLANS
- 2 CURB PER CIVIL PLANS
- 3 STRIPING PER CIVIL PLANS
- 4 ASPHALT BAND AROUND STAMPED ASPHALT CROSSWALK, REFER TO SURFACING SCHEDULE
- 5 STAMPED ASPHALT CROSSWALK, REFER TO SURFACING SCHEDULE
- 6 CONCRETE PAVERS, REFER TO SURFACING SCHEDULE
- 7 4" THICK 2,500 PSI CONCRETE PAVING, REFER TO SURFACING SCHEDULE
- 8 SCORE JOINT, REFER TO DETAIL 4/10
- 9 EXPANSION JOINT, REFER TO DETAIL 4/10
- 10 42" HIGH PAINTED STEEL FENCE, REFER TO DETAIL 1/10

**NORRIS DESIGN**  
Planning | Landscape Architecture | Branding  
418 North Toole Avenue  
Tucson, AZ 85701  
P 520.622.9565  
www.norris-design.com

Dibble Engineering		377 N. Church Avenue Suite 715 Tucson, AZ 85701 P 520.498.4065			
NO.	DATE	REVISION	BY	CHKD.	APPR.



DEPARTMENT OF TRANSPORTATION/ENGINEERING DIVISION				11 OF 11	
OFFSITE IMPROVEMENTS FOR TUCSON HIGH SCHOOL					
CITY OF TUCSON	DRWN. BY	MS,TP	12/19	REF.	SCALE:
	DSGN. BY	MS,TP	12/19		
	CHKD. BY	JK	12/19	PLAN NO.	X-XXXX-XXX



HARDSCAPE DETAILS